



# XOGRILL40XLT2

PERFORMANCE XLT2 40" GRILL HEAD

PUT SOME AWESOME IN YOUR BACKYARD

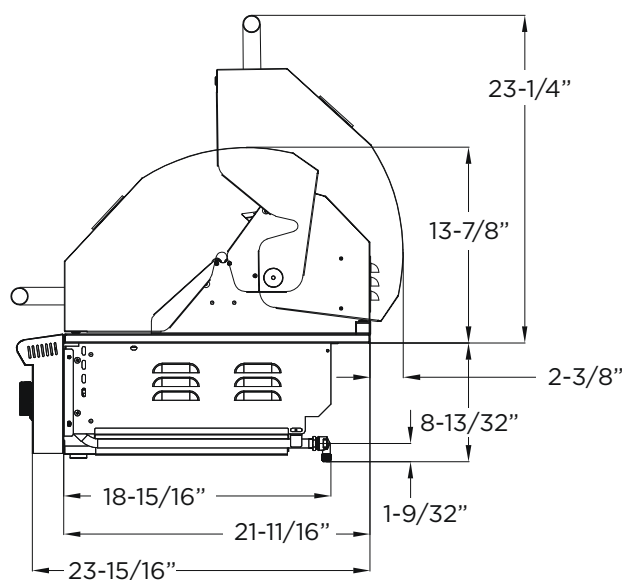
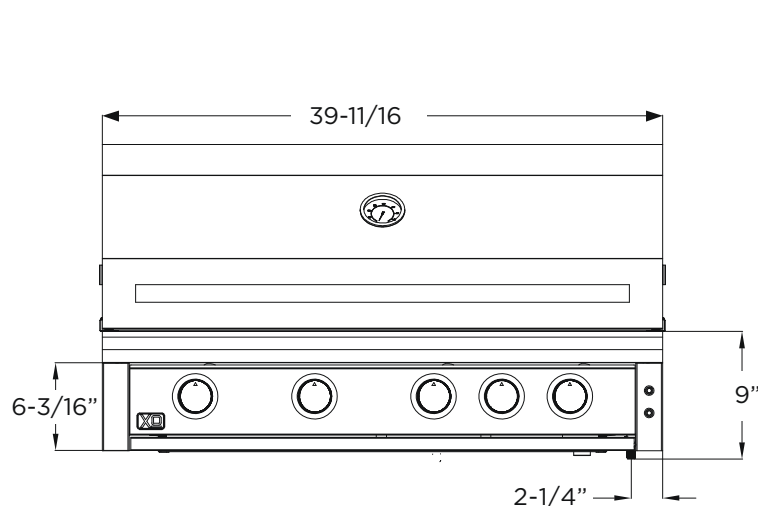


**XOGRILL40XLT2**

Family. Good friends. Great food. The sizzle and sear of your XO grill on a warm summer evening. These are the building blocks of memories. That's why our premium appliance experience and the learning from over 25 years of working with customers has gone into the design of every XO grill.

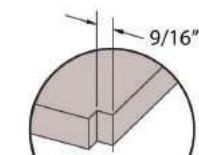
- 68,000 BTUS of Awesome Power
- (4) Heavy Duty Tubular Stainless Steel Burners
- Full coverage stainless steel flame tamer plates protect burners and add flavor
- Reliable Flame Thrower Ignition (ignites without electricity)
- Brilliant interior Halogen lighting
- Blue LEDs illuminate the control knobs when off / Change to Red in the on position
- Easy to read temperature gauge
- Spring counter balanced hood lifts effortlessly
- InfraRed rear burner for use with optional rotisserie
- Generous capacity - 872 sq. inches of cooking surface (662 primary, 210 secondary)
- Heavy duty, stainless steel grates hold the heat for strong grill marks
- Top rack provides baking and roasting area - tilts up to store

WORLD CLASS SERVICE | COMPREHENSIVE WARRANTIES  
OUR LASTING COMMITMENT TO YOU

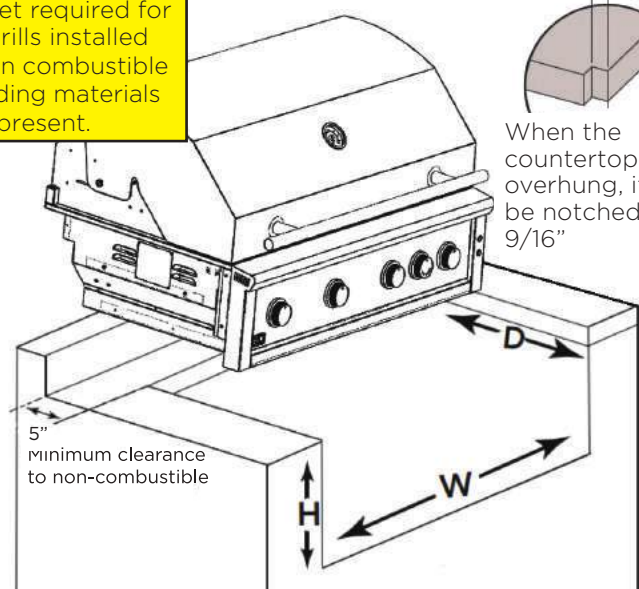


### BUILT-IN CUT OUT

Note: Insulating jacket required for all grills installed when combustible building materials are present.



When the countertop is overhung, it must be notched back 9/16"



### BUILT IN GRILL CUT OUT DIMENSIONS

	Width = W	Height = H	Depth = D
XOGRILL42XLT2	38 3/8"	8 1/2"	21 1/4"
XOGRILL42XLT2 w/Insulated Jacket	40 3/4"	9 1/2"	21 7/8"

### SPECIFICATIONS

**SIZE** 40"

**DIM** 39 11/16" W x 22 9/32" H x 23 15/16" D

### INSTALLATION TYPE

Built-in / Freestanding with optional cart

### FUEL

Specify Propane or Natural Gas. For NG. XO recommends using 3/4" gas lines.

### BURNERS

(4) Heavy Duty Tubular SS Burners each burner delivers up to 17,000 BTUs & combine to provide **68,000 BTUs of power!**

### GRILLING SURFACE (SQ.IN.)

Primary	Secondary	Total
662	210	872

### ELECTRICAL

Installation requires an outdoor 120v GFI electrical outlet adjacent to product

### POPULAR PERFORMANCE XLT2 GRILL OPTIONS

#### FULLY APPOINTED AND FEATURED MATCHING CARTS

With sturdy fold down side shelves, heavy duty locking casters, and interior shelf crafted from matching stainless steel.

**XOG40CARTXLT2**



#### ACCESS / STORAGE FOR BUILT-IN

Beautifully crafted stainless steel double doors or door/drawer combo units designed to fit perfectly below your grill.



**XOG40DDXLT**



**XOG40COMBOXLT**

#### INSULATED LINERS

Stainless steel insulated jackets are available for all XO gas fired appliances for use when combustible materials are used in the construction of your outdoor kitchen.



**XOG40JACKETXLT**

#### ROTISSERIE KIT

Take maximum advantage of your rear IR burner. Includes an outdoor rated motor, spit, poultry forks, and counterweight - everything you need to slow roast.

**XOROTIS40XLT**



#### TWIN SIDE BURNER

Designed to complement your grill and expand your cooking options, crafted in stainless steel, these two independently controlled 12,000 BTU burners will greatly expand your outdoor cooking options.

**XOGSIDEBXLT**



#### ALL WEATHER COVER

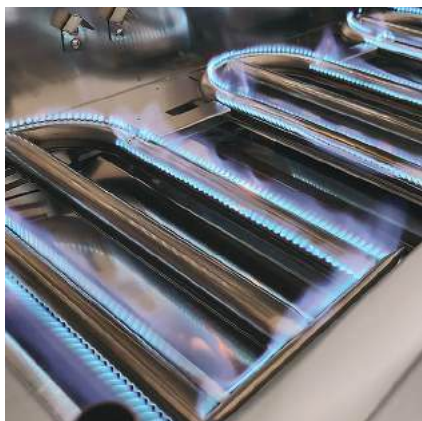
Protect your invest with an all weather cover designed for a perfect fit.



**XOG40COVERBI**



### PERFORMANCE XLT PRODUCT FEATURES



#### WELDED STAINLESS

BUILT TO LAST - SEAMLESS WELDED  
AND POLISHED STAINLESS STEEL  
CONSTRUCTION



#### STAINLESS STEEL BURNERS

LIFETIME WARRANTIED HEAVY DUTY  
TUBULAR STAINLESS STEEL BURNERS  
DELIVER 17,000 BTUs EACH



#### ILLUMINATION

BLUE LEDS INDICATE KNOBS ARE OFF  
RED LEDS INDICATE KNOBS ARE ON  
BRILLIANT INTERNAL HALOGENS



#### UPPER RACK FLIPS UP TO STORE

PROVIDES BAKING AND ROASTING  
AREA - TILTS UP WHEN NOT IN USE



#### EASY LIFT HOOD

LIFT SPRING COUNTER BALANCED



#### FULL COVERAGE SS FLAME TAMERS

FORMED STAINLESS STEEL FLAME TAMERS  
ENABLE RAPID HEAT UP, GUARD THE BURNERS  
AND VAPORIZE DRIPPINGS TO ADD FLAVOR



#### BUILT-IN THERMOMETER

EASY TO READ TEMPERATURE GAUGE



#### WELDED GRATES

HEAVY DUTY STAINLESS STEEL GRATES  
HOLD HEAT FOR STRONG GRILL MARKS



#### RELIABLE FLAME IGNITION

FLAME THROWER IGNITION WITHOUT  
AN ELECTRICAL CONNECTION