



XOGRILL32XLT2

PERFORMANCE XLT2 32" GRILL HEAD

PUT SOME AWESOME IN YOUR BACKYARD

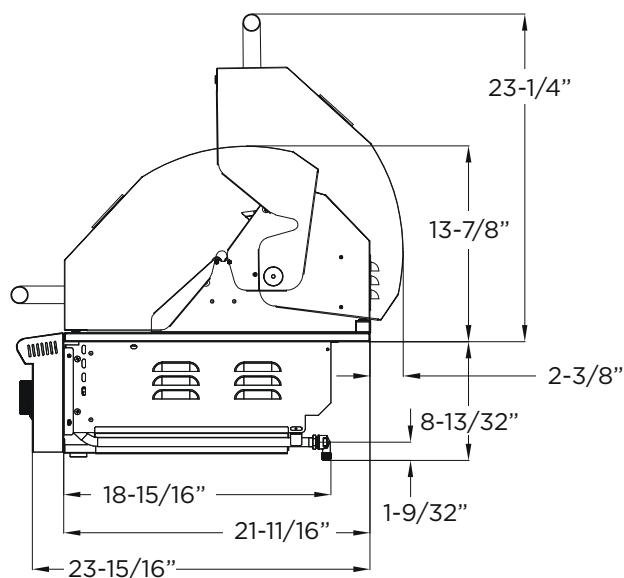
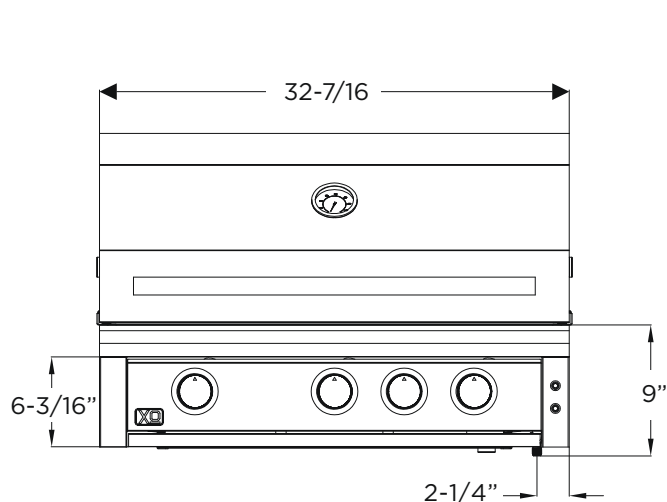


XOGRILL32XLT2

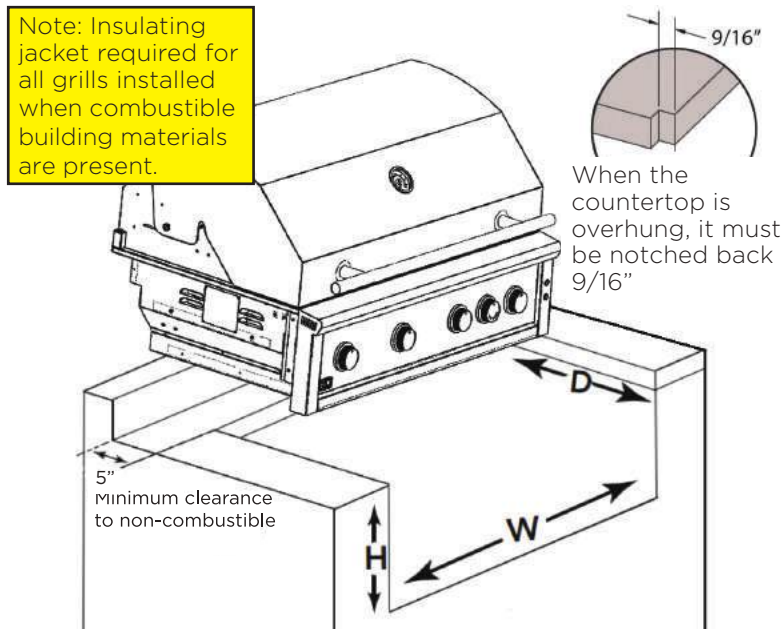
Family. Good friends. Great food. The sizzle and sear of your XO grill on a warm summer evening. These are the building blocks of memories. That's why our premium appliance experience and the learning from over 25 years of working with customers has gone into the design of every XO grill.

- 51,000 BTUS of Awesome Power
- (3) Heavy Duty Tubular Stainless Steel Burners
- Full coverage stainless steel flame tamer plates protect burners and add flavor
- Reliable Flame Thrower Ignition (ignites without electricity)
- Brilliant interior Halogen lighting
- Blue LEDs illuminate the control knobs when off / Change to Red in the on position
- Easy to read temperature gauge
- Spring counter balanced hood lifts effortlessly
- InfraRed rear burner for use with optional rotisserie
- Generous capacity - 702 sq. inches of cooking surface (530 primary, 172 secondary)
- Heavy duty, stainless steel grates hold the heat for strong grill marks
- Top rack provides baking and roasting area - tilts up to store

WORLD CLASS SERVICE | COMPREHENSIVE WARRANTIES
OUR LASTING COMMITMENT TO YOU



BUILT-IN CUT OUT



BUILT IN GRILL CUT OUT DIMENSIONS

	Width = W	Height = H	Depth = D
XOGRILL32XLT2	30 5/8"	8 1/2"	21 1/4"
XOGRILL32XLT2 w/Insulated Jacket	33 1/2"	9 1/2"	21 7/8"

SPECIFICATIONS

SIZE 32"

DIM 32 7/16" W x 22 9/32" H x 23 15/16" D

INSTALLATION TYPE

Built-in / Freestanding with optional cart

FUEL

Specify Propane or Natural Gas. For NG. XO recommends using 3/4" gas lines.

BURNERS

(3) Heavy Duty Tubular SS Burners
each burner delivers up to 17,000 BTUs &
combine to provide **51,000 BTUs of power!**

GRILLING SURFACE (SQ.IN.)

Primary	Secondary	Total
530	172	702

ELECTRICAL

Installation requires an outdoor 120v GFI
electrical outlet adjacent to product

POPULAR PERFORMANCE XLT2 GRILL OPTIONS

FULLY APPOINTED AND FEATURED MATCHING CARTS

With sturdy fold down side shelves, heavy duty locking casters, and interior shelf crafted from matching stainless steel.

XOG32CARTXLT2



ACCESS / STORAGE FOR BUILT-IN

Beautifully crafted stainless steel double doors or door/drawer combo units designed to fit perfectly below your grill.



XOG32DDXLT



XOG32COMBOXLT

INSULATED LINERS

Stainless steel insulated jackets are available for all XO gas fired appliances for use when combustible materials are used in the construction of your outdoor kitchen.



XOG32JACKETXLT

ROTISSERIE KIT

Take maximum advantage of your rear IR burner. Includes an outdoor rated motor, spit, poultry forks, and counterweight - everything you need to slow roast.

XOROTIS32XLT



TWIN SIDE BURNER

Designed to complement your grill and expand your cooking options, crafted in stainless steel, these two independently controlled 12,000 BTU burners will greatly expand your outdoor cooking options.

XOGSIDEBXLT



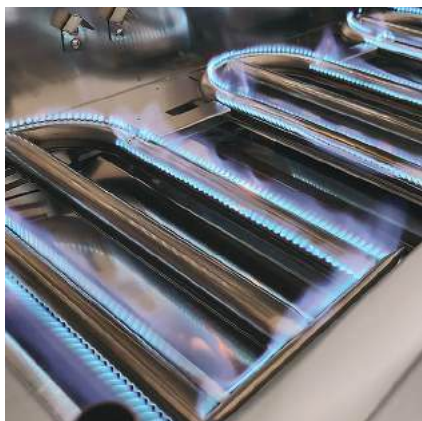
ALL WEATHER COVER

Protect your invest with an all weather cover designed for a perfect fit.



XOG32COVERBI

PERFORMANCE XLT PRODUCT FEATURES



WELDED STAINLESS

BUILT TO LAST - SEAMLESS WELDED
AND POLISHED STAINLESS STEEL
CONSTRUCTION



STAINLESS STEEL BURNERS

LIFETIME WARRANTIED HEAVY DUTY
TUBULAR STAINLESS STEEL BURNERS
DELIVER 17,000 BTUs EACH



ILLUMINATION

BLUE LEDS INDICATE KNOBS ARE OFF
RED LEDS INDICATE KNOBS ARE ON
BRILLIANT INTERNAL HALOGENS



UPPER RACK FLIPS UP TO STORE

PROVIDES BAKING AND ROASTING
AREA - TILTS UP WHEN NOT IN USE



EASY LIFT HOOD

LIFT SPRING COUNTER BALANCED



FULL COVERAGE SS FLAME TAMERS

FORMED STAINLESS STEEL FLAME TAMERS
ENABLE RAPID HEAT UP, GUARD THE BURNERS
AND VAPORIZE DRIPPINGS TO ADD FLAVOR



BUILT-IN THERMOMETER

EASY TO READ TEMPERATURE GAUGE



WELDED GRATES

HEAVY DUTY STAINLESS STEEL GRATES
HOLD HEAT FOR STRONG GRILL MARKS



RELIABLE FLAME IGNITION

FLAME THROWER IGNITION WITHOUT
AN ELECTRICAL CONNECTION