

UC - 15I**FEATURES**

Controls temperature within one degree of setpoint

Produces up to 50 pounds of octagonal-shaped ice per day; stores 25 pounds at a time

Locks in cold air to ensure freshness with magnetic door seals

Set the two, four, and eight-hour delay to temporarily stop ice production, or pause ice production at the same time every day with auto-delay

Holds built-in ice scoop neatly in the door so it is there when you need it

Accepts outdoor-rated stainless-steel accessory panels and handles to coordinate other Sub-Zero and Wolf outdoor appliances

ACCESSORIES

15" to 18" Filler

Cleaner For Undercounter Ice Maker

Filter For Undercounter Ice Maker

Pro Handle

Sanitizer For Undercounter Ice Maker

Stainless Steel Kickplate

Tubular Handle

15" Stainless Steel Door Panel - Pro Handle

15" Stainless Steel Door Panel - Tubular Handle

Accessories are available through an authorized dealer.
For local dealer information, visit subzero-wolf.com/locator.

**HANDLE ACCESSORIES**

PRO



TUBULAR

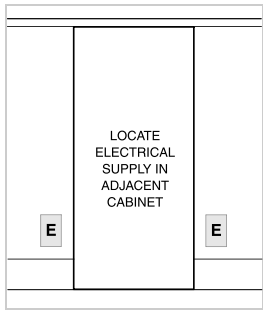
**PRODUCT DETAILS****FREEZER**

- LED lighting
- Built-in ice scoop

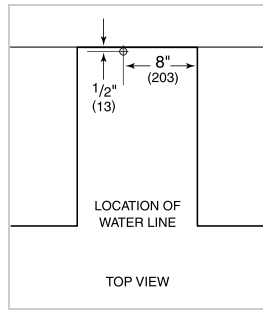
PRODUCT SPECIFICATIONS

Model	UC-151
Dimensions	14 3/4"W x 33 5/8"H x 23"D
Weight	115 lbs
Electrical Supply	115 VAC, 60 Hz
Electrical Service	15 amp dedicated circuit
Plumbing Supply	1/4" OD copper, braided stainless steel or PEX tubing
Plumbing Pressure	20–80 psi

ELECTRICAL



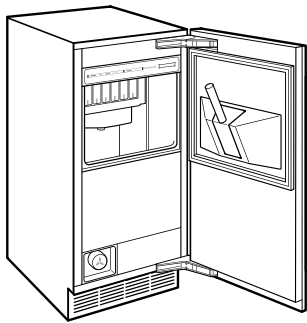
PLUMBING



ICE MAKER DRAIN Ice maker models can be ordered with or without a drain pump. Models without a pump will drain water by gravity. A drain must be provided for all models.

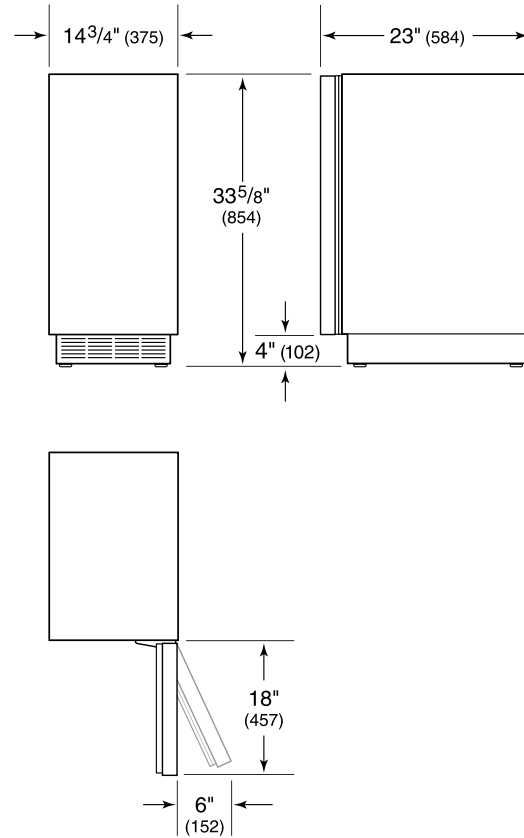
NOTE: Dimensions in parenthesis are in millimeters unless otherwise specified

INTERIOR VIEW

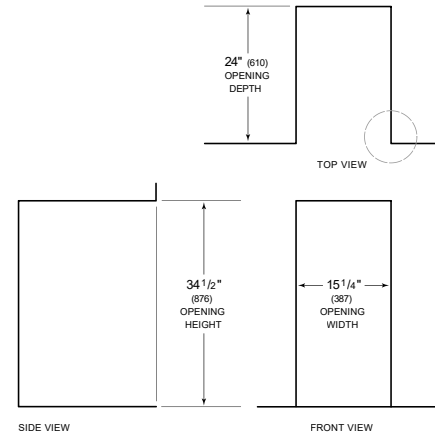


This illustration is intended for interior reference only and may not represent the exterior of the model being specified.

DIMENSIONS



STANDARD INSTALLATION



NOTE: 3 1/2" (89) finished returns will be visible and should be finished to match cabin

