

## Before the first use

⚠ Before commissioning the tumble dryer for the first time, make sure it has been installed correctly. Connect it correctly. Please read the separate operating instructions supplied with the appliance.

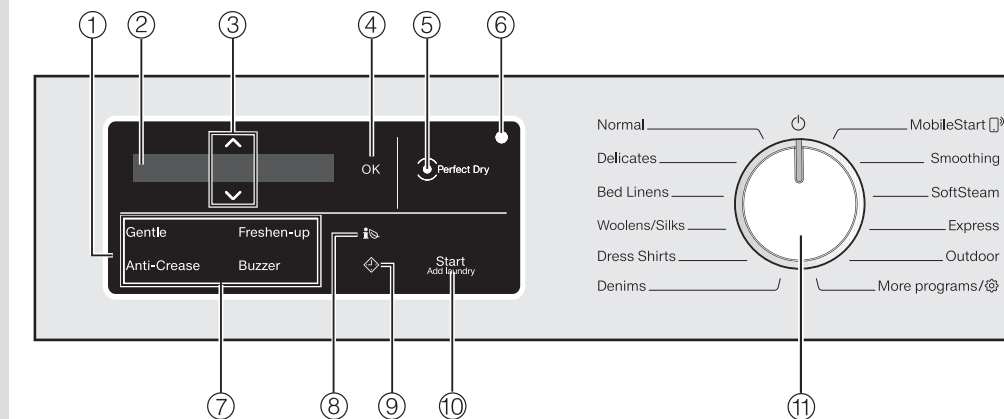


⚠ Damage caused by switching the appliance on too soon. The heat pump can be damaged. After installing the tumble dryer, wait for at least one hour before starting a drying program.

### Switching on the tumble dryer

■ Turn the program selector to a program. The welcome tone will sound and the welcome screen will light up. The display will guide you step by step through the initial commissioning process. For additional information please refer to the separate operating instructions supplied.

## Operation



### 1 Control field

The control field consists of a display and various sensor buttons.

### 2 Display

Various values are displayed and/or selected on the display.

### 3 $\wedge$ / $\vee$ sensor button

The values in the display can be changed with the  $\wedge$ / $\vee$  sensor buttons.

### 4 OK sensor button

Confirm the selected values with the OK sensor button.

### 5 PerfectDry indicator

The PerfectDry system measures the residual moisture present in the laundry in programs with selectable drying levels and provides a more precise drying result. The display flashes at the beginning of the program and lights up towards the end of the program.

### 6 Optical interface

For Service.

### 7 Sensor buttons for extra options

You can supplement the drying program with extra options.

### 8 EcoFeedback sensor button

You can use the EcoFeedback sensor button to call up an energy consumption forecast for the selected drying program.

### Operating the sensor buttons

The sensor buttons react to fingertip contact. If a sensor button is illuminated, it can be selected. If a sensor button is brightly lit, this means: currently selected. If a sensor button is dimly lit, this means: selection possible.

### 9 sensor button

The sensor button starts the Delay Start function.

### 10 Start/Add laundry sensor button

Touching the Start/Add laundry sensor button starts the selected program. The current program can be interrupted to add laundry. The program can be started as soon as the sensor button is flashing on and off. The sensor button lights up constantly once the program has started.

### 11 Program selector

For selecting programs and for switching the appliance off. The tumble dryer is switched on when you select a program and switched off by turning the program selector to the 0 position. More Programs/ gives access to additional programs and the option to change settings.

### Energy savings

There are various steps you can take to avoid unnecessarily long drying times and high energy consumption:

- Make sure your laundry is spun at the maximum spin speed before drying.

- Load according to the optimum amount of laundry recommended for the drying program. This will mean that the energy consumption for the amount of laundry is at its most economical.

- Clean the lint filters after every drying cycle.

- Make sure the room temperature is not too high. If there are other heat-producing appliances in the room in which the tumble dryer is located, make sure the room is well ventilated and switch the other appliances off.

## Drying

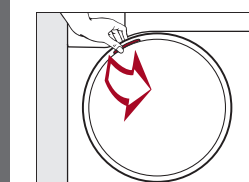
### Preparing the laundry

⚠ Damage due to foreign objects which were not removed from the laundry. Foreign objects can melt, burn, or explode.

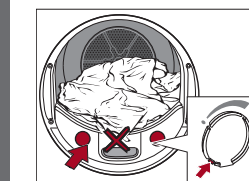
- Ensure that any foreign objects (e.g., detergent dispensing balls, loose bra wires, lighters) have been removed from the laundry.
- Fasten duvet covers and pillow cases to prevent small items from being rolled up inside them.

### Loading the tumble dryer

Do not overload the drum. Overloading can give a disappointing drying result and cause unnecessary wear and tear to the laundry. It can also cause more creasing.

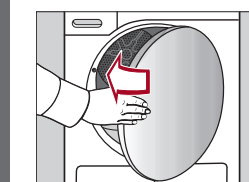


- Loosen the laundry.
- Open the tumble-dryer door.
- Check that the drum is empty.
- Load the laundry in the drum.
- Insert the fragrance flacon.

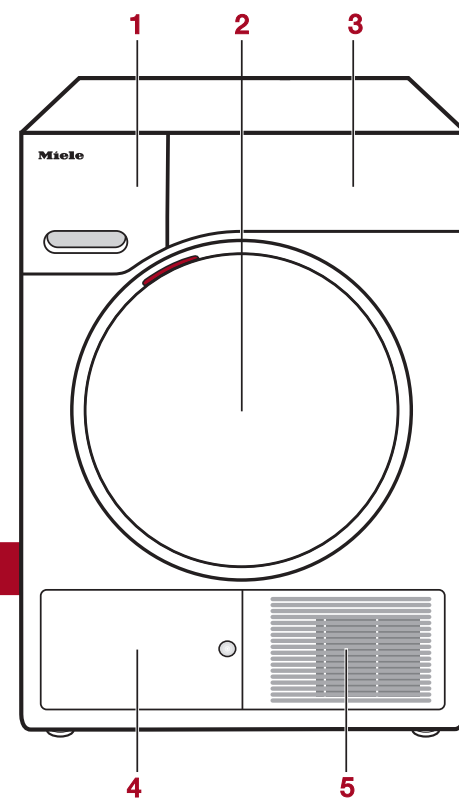


If you are drying without a fragrance flacon, close both sockets. Push the tabs on both covers to the bottom (see arrows).

- Shut the tumble-dryer door gently.



Risk of damaging laundry. When closing the door, make sure that laundry does not get trapped in the door opening.



- 1 Condensed-water container
- 2 Door
- 3 Control panel
- 4 Plinth-filter flap
- 5 Grille for cold-air intake

### 1. Selecting a program

■ Turn the program selector to a program. The drum lighting will come on.

### 3 possible ways to select a program:

**1. Selecting the standard programs with the program selector**

■ Turn the program selector to the required program.

The selected program will be shown in the display. This will then be replaced by the standard display.

### 2. Selecting further programs via the "More Programs/" position and the display

■ Turn the program selector to the More Programs/ position.

■ Touch the  $\vee$ / $\wedge$  sensor buttons until the program you want appears in the display.

■ Confirm the program with the OK sensor button.

### 3. Selecting programs via the MobileStart program selector position and the Miele app

■ Turn the program selector to the MobileStart position.

■ Follow the instructions in the display.

■ Touch the Start/Add laundry sensor button.

The tumble dryer can now be operated via a mobile device together with the Miele app.

### 2. Selecting program settings

**Tip:** The condensed-water container must be filled to use certain programs.

### Selecting the drying level

Drying levels can be selected for certain programs as per the "Program overview" table.

■ Touch the  $\vee$  or  $\wedge$  sensor button to select a drying level.

### Selecting the program cycle time

You can select a program cycle time for the Time Dry, Cold Air, Basket, and DryFresh programs.

■ Touch the  $\vee$  or  $\wedge$  sensor button to select a program cycle time.

### Selecting an extra option

Extra options can be selected for certain programs as per the "Program overview" table.

■ Touch the sensor button for the required extra option. It will then light up brightly.

### Freshen up

Odors are reduced or removed from clean (dry or damp) clothing.

### Gentle

Delicate fabrics with the symbol on the care label, e.g., acrylic garments, are dried at a lower temperature.

### Anti-crease

Helps to prevent creasing if the laundry is not removed immediately after the end of a program.

### Buzzer

A signal sounds at the end of the program.

### Delay start/SmartStart

With the Delay Start function, you can delay the start of the program. The start of the program can be delayed for 15 minutes up to a maximum of 24 hours.

### SmartStart

The SmartStart function lets you define a time period during which your dryer will start automatically.

### EcoFeedback

You can use the EcoFeedback sensor button to call up an energy consumption forecast for the selected drying program.

■ Touch the EcoFeedback sensor button.

The estimated energy-consumption levels will be displayed as a bar chart.

### 3. Starting a program

■ Touch the flashing Start/Add laundry sensor button.

The Start/Add laundry sensor button lights up and the program starts.

### Adding or removing laundry

You have forgotten an item of laundry, but the program has already started.

■ Touch the Start/Add laundry sensor button.

The door can be opened lights up in the display.\*

■ Open the tumble-dryer door.

■ Add or remove laundry items.

■ Close the door.

■ Touch the Start/Add laundry sensor button.

The program starts.

\* Exceptions

In some cases – for example, during the cooling phase or the Proofing program – it is not possible to add laundry items.

### Canceling the current program

You cannot change to another program once a program has started. This prevents the appliance being operated unintentionally.

If you adjust the program selector, Change not possible will light up in the display. This indicator goes out when you select the original program.

■ Turn the program selector to the 0 position.

The program is canceled. You can now select a new program.

## Program end

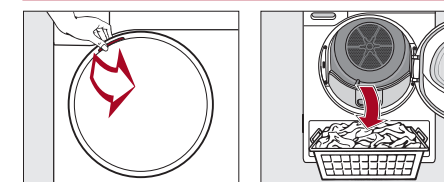
### Program end

The program is finished when End/Anti-crease or End appears in the display. The Start/Add laundry sensor button goes out.

- 10 minutes after the end of the program, the Start/Add laundry sensor button will begin to flash slowly and the display will go out.

- The tumble dryer switches off automatically.

Do not open the tumble-dryer door before the end of the program.



■ Open the door.

■ Remove the laundry.

Items left in the tumble dryer could be damaged by over-drying when the dryer is used the next time. Always remove all items from the drum.

If the dryer is switched on at the power supply and the door is opened, the drum lighting will come on. The drum lighting will go out after a few minutes to save energy.

■ Turn the program selector to 0.

■ Clean the lint filters.

■ Close the drum door.

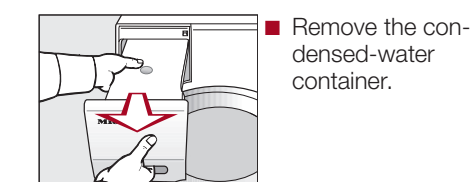
■ Empty the condensed-water container.

### Emptying the condensed-water container

Empty the condensed-water container after every drying program.

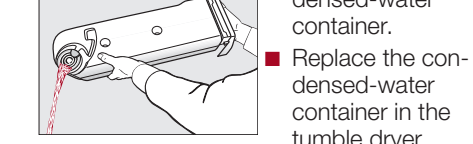
The Empty container See indicator will light up if the maximum level of the condensed-water container is reached.

■ Open and close the door to deactivate this message.



Remove the condensed-water container.

To prevent water running out, hold the condensed-water container by the front panel and at the back to keep it in a horizontal position.



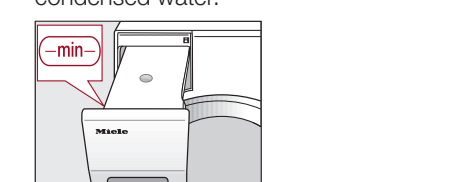
Empty the condensed-water container.

■ Replace the condensed-water container in the tumble dryer.

### Filling the condensed-water container

The condensed-water container must be filled to the -min- marker for the Soft-Steam program.

With the condensed water draining externally, the condensed-water container is empty. Only fill with commercially available condensed water.



To stop the spray jet becoming calcified, only fill with tap water in exceptional circumstances.

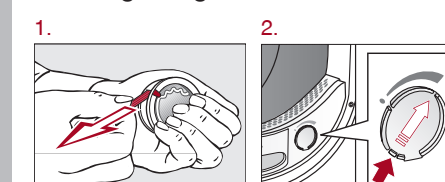
## FragranceDos

**Tip:** This tumble dryer has 2 sockets for inserting fragrance flacons. You can use one or both sockets to give your laundry a pleasant scent.

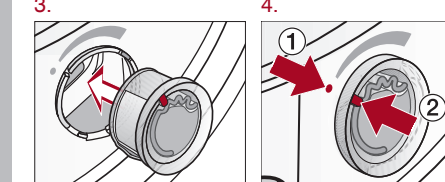
Close the unused socket.

Before using a fragrance flacon, please read "IMPORTANT SAFETY INSTRUCTIONS – Using a fragrance flacon (optional accessory)" and "Fragrance flacon" in the operating instructions.

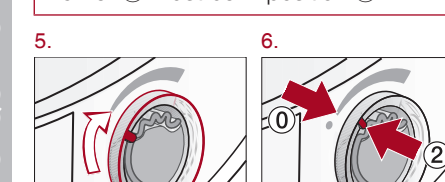
### Inserting a fragrance flacon



Marker 2 must be in position 1.



Marker 2 must be in position 0.



Turn the outer ring clockwise a little.

Marker 2 must be in position 0.

### Setting the fragrance intensity

The further you turn the outer ring of the fragrance flacon clockwise, the more intense the fragrance.

### Closing the fragrance flacon

Turn the outer ring counter-clockwise until marker 2 is in position 0.

### Removing the fragrance flacon

Turn the outer ring until marker 1 is in position 1.

Remove the fragrance flacon.



To prevent any fragrance running out of the flacon, do not lay it down on any surface.

■ Only store the fragrance flacon in its original packaging.



## Program guide

Program	Load [weight of dry laundry]	Laundry type	Extra options
<b>Normal</b>	17.6 lb (8 kg)	T-shirts, underwear, baby clothes, workwear, jackets, covers, aprons, overalls, hand towels, bath towels, bathrobes, and flannel/bed linen are suitable, do not use Extra dry for T-shirts, underwear, or baby clothes	(A), (B), (C), (D)
<b>Delicates</b>	5.7 lb (2.5 kg)	Dress shirts, blouses, lingerie, appliquéd garments	(B), (C), (D)
<b>Bed Linen</b>	8.8 lb (4 kg)	Bed linen, pillowcases	(C), (D)
<b>Woolens/Silks</b>	4.4 lb (2 kg)	Silk garments which are suitable for tumble drying, e.g. pullovers, cardigans, socks, leggings, shirts/ blouses, and lingerie	(A), (B), (C), (D)
<b>Dress Shirts</b>	4.4 lb (2 kg)	Shirts, blouses	(A), (B), (C), (D)
<b>Denims</b>	6.6 lb (3 kg)	Pants, jackets, skirts, shirts	(A), (B), (C), (D)
<b>MobileStart</b>	The Miele@mobile app is used to select the programs and operate the appliances.		
<b>Smoothing</b>	2.2 lb (1 kg)	Cotton pants, jackets, shirts	(B), (C), (D)
<b>SoftSteam</b>	2.2 lb (1 kg)	Any items that need to be moistened or smoothed	(C), (D)
<b>Express</b>	8.8 lb (4 kg)	<b>The condensed-water container must be filled</b> Resilient garments (suitable for the Normal program)	(C), (D)
<b>Outerwear</b>	5.5 lb (2.5 kg)	Outdoor clothing	(B), (C), (D)
<b>Time Dry</b>	17.6 lb (8 kg)	Thick and multi-layered jackets, pillows, sleeping bags, blankets	(B), (C), (D)
<b>Table Linens/Drapes</b>	8.8 lb (4 kg)	Table linen, drapes, curtains	(C), (D)
<b>Wrinkle free</b>	8.8 lb (4 kg)	Workwear, overalls, pullovers, dresses, pants, table linen, leggings	(A), (B), (C), (D)
<b>Pillows</b>	-	Pillows: 2 small 15 3/4" x 31 1/2" (40 x 80 cm) or 1 large 31 1/2" x 31 1/2" (80 x 80 cm)	(C), (D)
<b>Cold Air</b>	17.6 lb (8 kg)	Any items that need to be aired	(C), (D)
<b>Proofing</b>	5.5 lb (2.5 kg)	Microfiber fabrics; skiwear, outdoor clothing, fine, close weave cotton garments (poplin), tablecloths	(C), (D)
<b>Basket</b>	Max. load for basket 7.7 lb (3.5 kg)	<b>Risk of fire! Do not use proofing agents containing paraffin</b> Bags, shoes, teddies, caps, scarves, gloves, sequined tops	(D)
<b>Sportswear</b>	6.6 lb (3 kg)	<b>Use with dryer basket (optional accessory)</b> Sportswear	(B), (C), (D)
<b>DryFresh</b>	17.6 lb (8 kg)	All fabrics (to air or freshen up) <b>Use with DryFresh fragrance flacon (optional accessory)</b>	(C), (D)

(A) = Freshen up; (B) = Gentle; (C) = Anti-crease; (D) = Buzzer

X = yes, - = no

### Care symbols

Ironing	Drying

## PROGRAM GUIDE

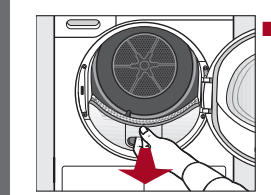
## Cleaning and care

### Lint filters

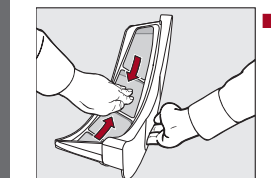
#### Removing visible lint

Clean the 2 lint filters in the door opening at the end of every program.

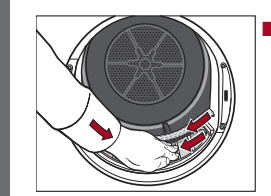
Remove the fragrance flacon.



■ Pull the upper lint filter forward to remove it.



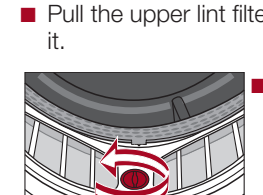
■ Use your fingers or a vacuum cleaner to remove the lint from the surface of the filter.



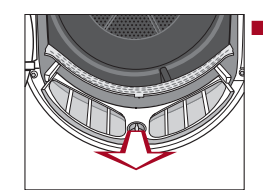
■ Push the upper lint filter back into position until it clicks.  
■ Close the door.

#### Cleaning the lint filters and air-flow openings thoroughly

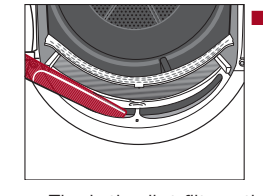
If the drying duration has become longer or the surface of the filters is visibly compacted with lint, you should carry out the following cleaning procedure.



■ Turn the yellow knob on the lower lint filter in the direction of the arrow (until you hear it click).



■ Hold the knob and pull the lint filter forward to remove it.



■ Use a vacuum cleaner to remove any visible lint from the upper air-flow openings.

■ Flush the lint filters through with warm running water.  
■ Shake the lint filters thoroughly and then dry them carefully.

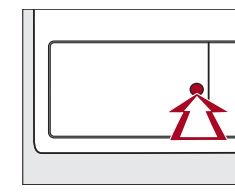
Ensure the filters are dry before replacing them.

■ Reinsert all of the lint filters and close the door.

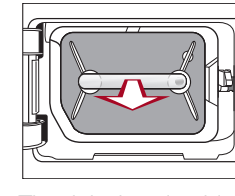
### Plinth filter

Clean the plinth filter when the program cycle time is longer than usual or whenever lights up. See lights up.

Confirm with OK to clear the message.

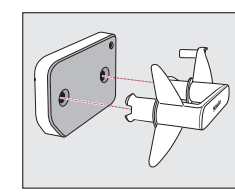


■ Press the round, indented area on the flap to open it.



■ Pull the plinth filter out by the handle.

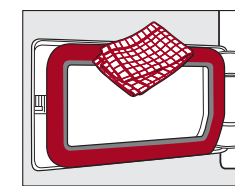
The right-hand guide pin comes out when the plinth filter is removed. The guide pin prevents the access panel from closing without the plinth filter.



■ Pull the handle out of the plinth filter.

■ Clean the plinth filter thoroughly under running water.  
■ Squeeze the plinth filter very carefully several times as you rinse it.

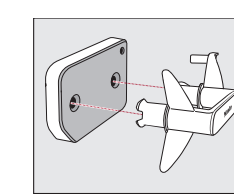
■ Rinse the plinth filter until all visible residues have been removed.



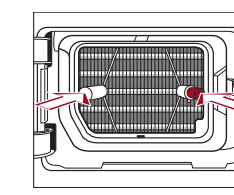
■ Use a damp cloth to remove any lint.

### Reinserting the plinth filter

Let the plinth filter dry completely, do not put it back wet or damp.



■ Install the plinth filter back on the handle. Make sure it is the correct way round.



■ Push the plinth filter in completely. This will push in the right-hand guide pin at the same time.

■ Close the flap.

## Frequently asked questions

Some of the messages in the display are more than one line long. Touch the V or ^ sensor button to read them in full.

Problem	Possible cause and solution
000 lights up after switching on	Access via a PIN code has been activated. ■ You must enter the correct PIN code to use the tumble dryer. See "Settings menu – PIN Code" in the operating instructions.
Empty container See  lights up after a program has been canceled	The condensed-water container is full or there is a kink in the drain hose. ■ Open and close the door with the tumble dryer switched on to clear the fault. Or switch the tumble dryer off and then on again. ■ Empty out the condensed-water container. ■ Check the drain hose.
Clean plinth filter. See  lights up at the end of a program	There is a build-up of lint. ■ To deactivate the message, confirm with OK. ■ See "Cleaning and care" in the operating instructions. ■ Clean the lint filter. ■ Clean the plinth filter.
Clean plinth filter. See  lights up after a program has been canceled	There is a blockage due to a build-up of lint. ■ See "Cleaning and care" in the operating instructions. ■ To deactivate the message, turn the program selector to the 0 position. ■ Clean the lint filter. ■ Clean the plinth filter. ■ Cleaning the air flow openings. ■ Clean the heat exchanger.
Fill the condensed water container	The condensed-water container is empty. Water is taken and recycled from the condensed-water container when certain programs are being used. ■ To deactivate the message, confirm with OK. ■ Fill the condensed-water container to at least the —min— marker.
End/Cooling down	The laundry will be cooled down at the end of the program. ■ Either remove the laundry and spread it out to cool down or leave it in the tumble dryer to cool down during the cooling phase.

Problem	Possible cause and solution
The display is in a different language	A different language has been selected in "Settings, Language". ■ Set the language you want. The flag symbol will guide you.
The display remains dark, and the sensor button does not light up or flash	There is no power to the tumble dryer. ■ Check whether the electrical plug is plugged in. ■ Check whether the breaker has tripped. The tumble dryer has switched off automatically to save energy. ■ Turn the program selector to switch the tumble dryer on again.
The laundry is not sufficiently dry	The load consisted of different types of fabric. ■ Finish drying using the Time Dry program. ■ Select a more suitable program next time.
Items made of synthetic fibers are charged with static electricity after drying	Items made of synthetic fibers can become charged with static electricity in the tumble dryer. ■ Static charge can be reduced by adding a fabric softener to the final rinse in the washing program.
Lint is caused by tumble drying	Lint is principally the result of friction when garments are being worn and to some extent when they are being washed. Machine drying hardly causes any lint to form. Lint is collected by the lint filters and the plinth filter. ■ See "Cleaning and care" in the operating instructions.
You can hear operating noises (buzzing/humming)	This is not a fault. The compressor (heat pump) is operating. Or you have selected a program which sprays condensed water into the drum. ■ No action required.

## Miele

## Quick Start Guide Heat-Pump Dryer



## FREQUENTLY ASKED QUESTIONS

These short instructions are not a substitute for the operating instructions supplied with the appliance! It is essential to familiarize yourself with the dryer before using it for the first time. Take note of the operating instructions, as well as the "IMPORTANT SAFETY INSTRUCTIONS".