

REF24BMFIXNV

REFRIGERATOR 24" FREESTANDING BOTTOM MOUNT WITH ICE MAKER
STAINLESS STEEL FINISH



Energy star rated refrigerator & freezer with 11.4 cu.ft capacity, powered by variable-speed compressor and single evaporator.

Automated defrosting of evaporator ensures food stays always fresh.

Fresco drawer with separate temperature control (27 to 37 °F) and adjustable humidity for optimal storage of meat, cold cuts, shellfish, fish and dairy products.

Three shelves, a metal bottle rack and three door bins ensure food is neatly stored and well-preserved. The freezer compartment features two standard-size drawers and one half drawer, making it easy to retrieve frozen items.

Automatic ice maker with daily capacity of 1.8 lbs of ice.

Digital LED touch interface with user-friendly controls for temperature, speed-cooling, speed-freezing, vacation mode and eco mode.

Reversible doors for left or right swing configuration.

Choose Professional or Master Series handle kit to match your other Bertazzoni kitchen appliances.

2 years parts & labor warranty.

PRODUCT FEATURES

Size	W 23 7/16"
Volume	Ref 7.9 cu.ft / Frz 3.5 cu.ft
Door finish	No fingerprint stainless steel
User interface	Internal digital LED touch interface
Lighting	LED on the top
Refrigerator shelves	2 fixed and 1 height-adjustable
Refrigerator drawers	1 + 1 fresco drawer with separate temperature and humidity control
Freezer compartment	3 drawers
Door storage	1 stationary + 2 height-adjustable
Ice maker	Automatic ice maker 1.8 lbs / 24 h
Settings	Super cool, Super freeze, Eco mode, Vacation mode, Sabbath mode

TECHNICAL SPECIFICATIONS

Electrical supply	115 V 60 HZ - 175 W - 0.8 Amp
Power connection	NEMA 5-15P with 83"" power cord
Sound rating	39 dbA
Water connection	1/4" waterline with shut-off valve
Water supply pressure	25-80 psi (1.7-5.5 bar)
Energy consumption	480.0 kwh/yr
Certification	CEC,ETL,NSF
Warranty	2 years parts & labor
Packaging dimensions	W 26 3/8" H 75 9/16" D 28 3/4"
Weight	177.0 lbs

ACCESSORIES

PROHK24BM	Handle kit for 24" & 31" bottom mount refrigerator - Professional Series
MASHK24BM	Handle kit for 24" & 31" bottom mount refrigerator - Master Series



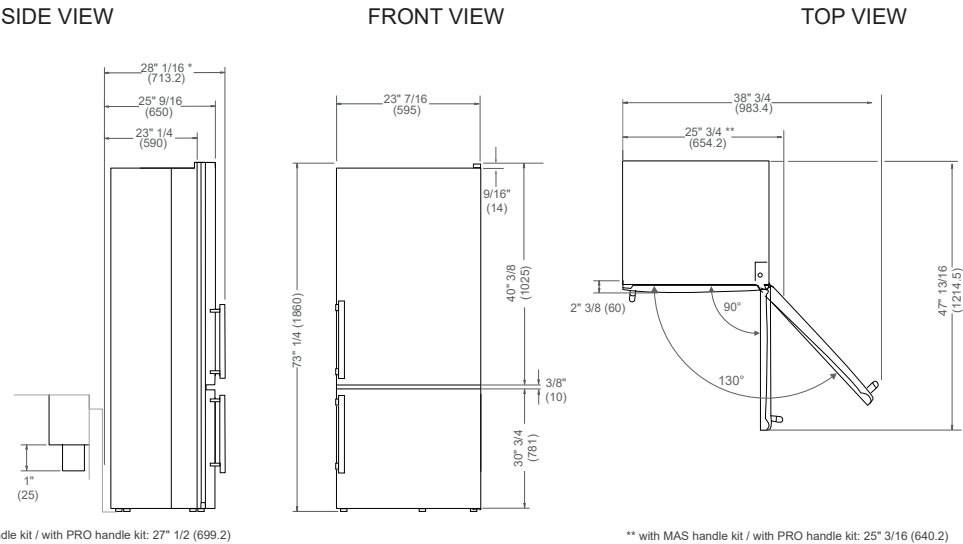
REF24BMFIXNV

REFRIGERATOR 24" FREESTANDING BOTTOM MOUNT WITH ICE MAKER

STAINLESS STEEL FINISH



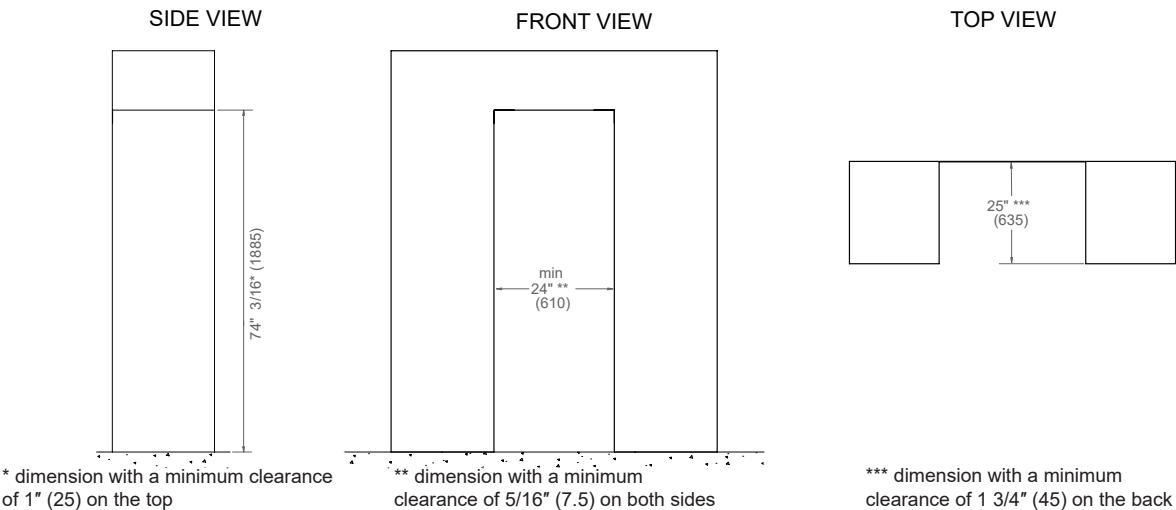
PRODUCT DIMENSIONS



* with MAS handle kit / with PRO handle kit: 27" 1/2 (699.2)

** with MAS handle kit / with PRO handle kit: 25" 3/16 (640.2)

CUTOUT DIMENSIONS (Counter-depth Installation)



* dimension with a minimum clearance of 1" (25) on the top

** dimension with a minimum clearance of 5/16" (7.5) on both sides

*** dimension with a minimum clearance of 1 3/4" (45) on the back

ELECTRICAL AND WATER CONNECTIONS

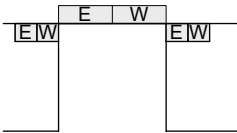


A properly-grounded, horizontally-mounted electrical receptacle should be installed according to this drawing



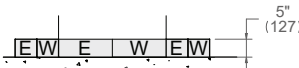
To connect to the water supply system, use the provided 1/4" water hose and 1/4" compression fitting nut. Provide for an accessible shut-off valve. Water hose is 59" (1500) long.

TOP VIEW



Connection(s) placement within the opening may require additional cabinet depth.

FRONT VIEW



Dimensions in parentheses are millimeters unless otherwise specified.