



**SAMSUNG**

# Simple User Guide




Thank you for purchasing this Samsung product.

To receive more complete service, please register your product at [www.samsung.com](http://www.samsung.com)

Model \_\_\_\_\_ Serial No. \_\_\_\_\_

If you have any questions, please call us at 1-800-SAMSUNG (1-800-726-7864) for assistance.



# Before Reading This Simple User Guide

This TV comes with this Simple User Guide and an embedded User guide (ⓘ) > ≡ (left directional button) > ⚙️ Settings > Support > Open User guide).

On the website (www.samsung.com), you can download the manuals and see its contents on your PC or mobile device.

To activate the Samsung Smart Remote, press ⏻ on it. (This is required only when using it for the first time.)

## Warning! Important Safety Instructions

Please read the Safety Instructions before using your TV.

Refer to the table below for an explanation of symbols which may be on your Samsung product.

CAUTION	
RISK OF ELECTRIC SHOCK. DO NOT OPEN.	
CAUTION: TO REDUCE THE RISK OF ELECTRIC SHOCK, DO NOT REMOVE COVER (OR BACK). THERE ARE NO USER SERVICEABLE PARTS INSIDE. REFER ALL SERVICING TO QUALIFIED PERSONNEL.	
	This symbol indicates that high voltage is present inside. It is dangerous to make any kind of contact with any internal part of this product.
	This symbol indicates that this product has included important literature concerning operation and maintenance.
	Class II product: This symbol indicates that a safety connection to electrical earth (ground) is not required. If this symbol is not present on a product with a power cord, the product MUST have a reliable connection to protective earth (ground).
	AC voltage: Rated voltage marked with this symbol is AC voltage.
	DC voltage: Rated voltage marked with this symbol is DC voltage.
	Caution. Consult instructions for use: This symbol instructs the user to consult the Simple User Guide for further safety related information.

## Power

- Do not overload wall outlets, extension cords, or adapters beyond their voltage and capacity. It may cause fire or electric shock.

Refer to the power specifications section of the manual or the power supply label on the product for voltage and amperage information.

- Power-supply cords should be placed so that they are not likely to be walked on or pinched by items placed upon or against them. Pay particular attention to cords at the plug end, at wall outlets, and at the point where they exit from the appliance.
- Never insert anything metallic into the open parts of this apparatus. This may cause electric shock.
- To avoid electric shock, never touch the inside of this apparatus. Only a qualified technician should open this apparatus.
- Be sure to plug in the power cord until it is firmly seated. When unplugging the power cord from a wall outlet, always pull on the power cord's plug. Never unplug it by pulling on the power cord. Do not touch the power cord with wet hands.
- If this apparatus does not operate normally - in particular, if there are any unusual sounds or smells coming from it - unplug it immediately and contact an authorized dealer or Samsung service center.
- To protect this apparatus from a lightning storm, or to leave it unattended and unused for a long time, be sure to unplug it from the wall outlet and disconnect the antenna or cable system.
  - Accumulated dust can cause an electric shock, an electric leakage, or a fire by causing the power cord to generate sparks and heat or by causing the insulation to deteriorate.
- Use only a properly grounded plug and wall outlet.
  - An improper ground may cause electric shock or equipment damage. (Class I Equipment only.)
- To turn off this apparatus completely, disconnect it from the wall outlet. To ensure you can unplug this apparatus quickly if necessary, make sure that the wall outlet and power plug are readily accessible.

## Installation

- Do not place this apparatus near or over a radiator or heat register, or where it is exposed to direct sunlight.
- Do not place any objects (vases etc.) containing water on this apparatus, as this can result in a fire or electric shock.
- Do not expose this apparatus to rain or moisture.
- Be sure to contact an authorized Samsung service center for information if you intend to install your TV in a location with heavy dust, high or low temperatures, high humidity, chemical substances, or where it will operate 24 hours a day such as in an airport, a train station, etc. Failure to do so may lead to serious damage to your TV.
- Do not expose this apparatus to dripping or splashing.

## Mounting the TV on a wall



Because access to Media Bay of the TV may be limited due to the design of the wall-mount that you use, connecting all cables and devices that you need prior to hanging the TV on the wall is recommended. When connecting additional cables and devices to the TV after hanging on the wall, you may need to separate the TV from wall-mount.



If you mount this TV on a wall, follow the instructions exactly as set out by the manufacturer. If it is not correctly mounted, the TV may slide or fall and cause serious injury to a child or adult and serious damage to the TV.

- To order the Samsung wall mount kit, contact Samsung service center.
- Samsung Electronics is not responsible for any damage to the product or injury to yourself or others if you choose to install the wall mount on your own.
- You can install your wall mount on a solid wall perpendicular to the floor. Before attaching the wall mount to surfaces other than plaster board, contact your nearest dealer for additional information. If you install the TV on a ceiling or slanted wall, it may fall and result in severe personal injury.
- When installing a wall mount kit, we recommend you fasten all four VESA screws.
- If you want to install a wall mount kit that attaches to the wall using two top screws only, be sure to use a Samsung wall mount kit that supports this type of installation. (You may not be able to purchase this type of wall mount kit, depending on the geographical region.)

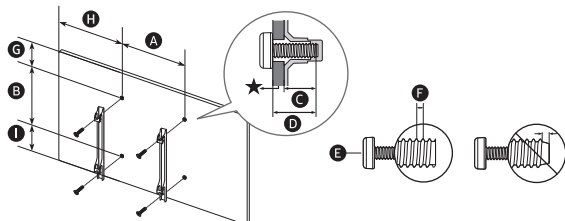
- Do not mount the TV at more than a 15 degree tilt.
- Standard dimensions for wall mount kits are shown in the table.



Do not install your wall mount kit while your TV is turned on. This may result in personal injury from electric shock.

- Do not use screws that are longer than the standard dimension or do not comply with the VESA standard screw specifications. Screws that are too long may cause damage to the inside of the TV set.
- For wall mounts that do not comply with the VESA standard screw specifications, the length of the screws may differ depending on the wall mount specifications.
- Do not fasten the screws too firmly. This may damage the product or cause the product to fall, leading to personal injury. Samsung is not liable for these kinds of accidents.
- Samsung is not liable for product damage or personal injury when a non-VESA or non-specified wall mount is used or when the consumer fails to follow the product installation instructions.
- Always have two people mount the TV onto a wall.
- **WARNING:** This apparatus must be securely attached to the wall.  
"Tipping, shaking, or rocking the machine may cause injury/death." (CSA60065)

## Wall Mount Specifications (VESA)



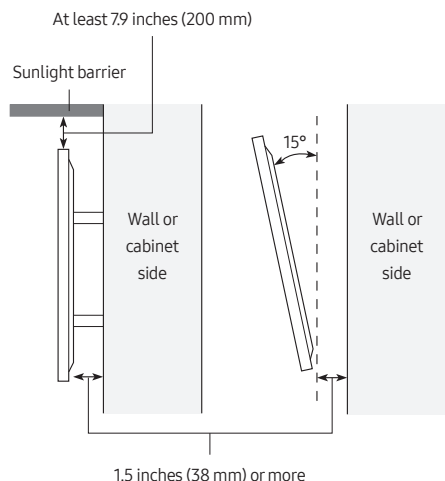
★ : Wall-Mount Bracket

TV size in inches	VESA screw hole specs (A x B) (mm)	G (mm)	D	E x 4	F (mm)	G (inches)	H (inches)	I (inches)
55	200 x 200	9-11	G + ★	M8	1.25	10.0	20.6	10.5
65	400 x 400					7.1	21.0	10.4
75						11.3	25.4	11.3

## Providing proper ventilation for your TV

When you install your TV, maintain a distance of at least 1.5 inches (38 mm) between the TV and other objects (walls, cabinet sides, etc.) to ensure proper ventilation. Failing to maintain proper ventilation may result in a fire or a problem with the product caused by an increase in its internal temperature.

- When you install your TV with a wall mount, we strongly recommend you use parts provided by Samsung Electronics only. Using parts provided by another manufacturer may cause difficulties with the product or result in injury caused by the product falling.
- The Terrace can be installed in a tilted position on a wall or a cabinet side, up to 15°.



## Safety Precaution



**Caution:** Pulling, pushing, or climbing on the TV may cause the TV to fall. In particular, do not hang on or destabilize the TV. This action may cause the TV to tip over, causing serious injuries or death. Follow all safety precautions provided in the Safety Flyer included with your TV.



**WARNING:** Never place a television set in an unstable location. The television set may fall, causing serious personal injury or death. Many injuries can be avoided by taking simple precautions such as:

- Always use cabinets or mounting methods recommended by Samsung.
- Always use furniture that can safely support the television set.
- Always ensure the television set is not overhanging the edge of the supporting furniture.
- Always educate about the dangers of climbing on furniture to reach the television set or its controls.
- Always route cords and cables connected to your television so they cannot be tripped over, pulled or grabbed.
- Never place a television set in an unstable location.
- Never place the television set on tall furniture (for example, cupboards or bookcases) without anchoring both the furniture and the television set to a suitable support.
- Never place the television set on cloth or other materials that may be located between the television set and supporting furniture.
- Never place items that might tempt to climb, such as toys and remote controls, on the top of the television or furniture on which the television is placed.

If the existing television set is going to be retained and relocated, the same considerations as above should be applied.

## Operation

- This apparatus uses batteries. In your community, there might be environmental regulations that require you to dispose of these batteries properly. Please contact your local authorities for disposal or recycling information.
- Store the accessories (remote control, batteries, or etc.) in a location safely out of the reach.
- Do not drop or strike the product. If the product is damaged, disconnect the power cord and contact a Samsung service center.
- Do not dispose of remote control or batteries in a fire.
- Do not short-circuit, disassemble, or overheat the batteries.
- **CAUTION:** There is danger of an explosion if you replace the batteries used in the remote with the wrong type of battery. Replace only with the same or equivalent type.
- **WARNING -** Do not use liquid fumigators containing chemicals, such as mosquito repellent or air freshener, around the product.
  - If steam comes in contact with the product surface or enters the product, it may cause stains or malfunction.
- **WARNING - TO PREVENT THE SPREAD OF FIRE, KEEP CANDLES AND OTHER ITEMS WITH OPEN FLAMES AWAY FROM THIS PRODUCT AT ALL TIMES.**



## Caring for the TV

- To clean this apparatus, unplug the power cord from the wall outlet and wipe the product with a soft, dry cloth. Do not use any chemicals such as wax, benzene, alcohol, thinners, insecticide, air fresheners, lubricants, or detergents. These chemicals can damage the appearance of the TV or erase the printing on the product.
- The exterior and screen of the TV can get scratched during cleaning. Be sure to wipe the exterior and screen carefully using a soft cloth to prevent scratches.
- Do not spray water or any liquid directly onto the TV. Any liquid that goes into the product may cause a failure, fire, or electric shock.

## Internet security

Samsung takes a number of steps to protect its Internet-compatible Smart TVs against unauthorized incursions and hacking. For example, certain sensitive communications between the TV and the Internet servers are encrypted. In addition, the TV's operating system has adopted controls to prevent the installation of unauthorized applications.

Although we take steps to protect your Smart TV and personal information, no Internet-connected device or transmission is completely secure. We therefore encourage you to take additional steps to safeguard your TV, secure your Internet connection, and minimize the risk of unauthorized access. These steps are listed below:

- When Samsung releases software updates to improve the security of your TV, you should promptly install these updates. To automatically receive these updates, turn on **Auto Update** in the TV's menu (⏏ > ≡ (left directional button) > ⚙️ **Settings** > **Support** > **Software Update** > **Auto Update**). When an update is available, a popup message appears on the TV screen. Accept the software download and update by selecting **Yes** when prompted. Take steps to secure your wireless access point and network. Your access point's manual should provide additional details about how to implement the following measures:
  - Secure your wireless access point's management settings with a unique password to prevent unauthorized changes to security related settings.

- Implement standard encryption (e.g., WPA2 encryption) on your wireless access point to secure your wireless network signal.
  - Secure access to your wireless network with a hard-to-guess password.
  - Confirm your access point's firewall setting is enabled (if applicable).
  - Make sure that all your Internet-connected devices are behind your network's firewall.
  - If your access point or modem has a standby mode button, use it to disconnect your home network from the Internet when it is not in use.
- Use strong passwords for all your Internet accounts (Netflix, Facebook, etc.).
  - If any unexpected messages appear on your TV screen requesting permission to link a device or enable a remote session, do NOT accept.
  - Do not visit suspicious websites and do not install any suspicious programs. We recommend that users install only those authorized apps provided by Samsung through Samsung Smart Hub.

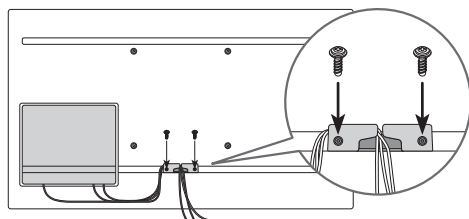
## 01 Package Content

Make sure the following items are included with your TV. If any items are missing, contact your dealer.

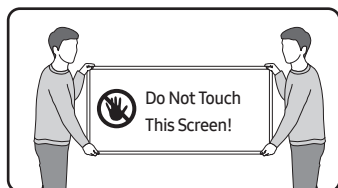
- 
- Simple User Guide
  - Warranty Card / Regulatory Guide (Not available in some locations)
  - Samsung Smart Remote
  - TV Power Cord
  - Holder-Cable
  - Screw x 2 (M4 x L7)
- 

- The items' colors and shapes may vary depending on the models.
- Cables not included can be purchased separately.
- Check for any accessories hidden behind or in the packing materials when opening the box.

## Using the Holder-Cable



The screen can be damaged from direct pressure when handled incorrectly. As shown in the figure, make sure to grip the edges of the screen when you lift the TV.

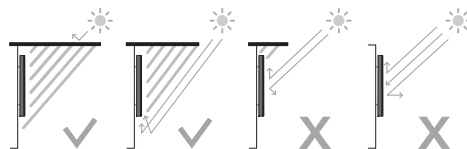


## 02 TV Installation

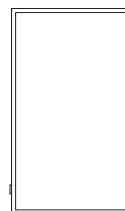


- TV screen must not be exposed to direct sunlight.
  - If the TV screen is exposed to direct sunlight, it can develop dark areas. This is a common symptom of LCD Panel and dark areas will disappear when the screen is taken out of direct sunlight.
  - Continuous exposure to direct sunlight may cause damage to the TV screen.
- The brightness sensor, which is located at the bottom right side of the product, should not be covered by any object and totally exposed to outside.
  - The TV will activate "Sunlight Protection" if it senses too much brightness in the surrounding area. The luminance may be lowered to protect the TV screen.
- For the stable use of the product, it should be installed in a place where there is no risk of freezing due to snow accumulation or exposure to rain for a long time.
- It cannot be installed in a recessed space.
- The Terrace must be installed only in Landscape orientation, not in Portrait orientation.
- We recommend that you ask a professional installation service company to install it. For more information on installation, contact the dealer where you purchased the product.

## Planning the location



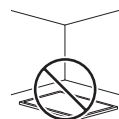
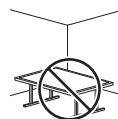
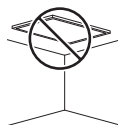
Landscape



Portrait



Do not install The Terrace on a ceiling, floor, or table.



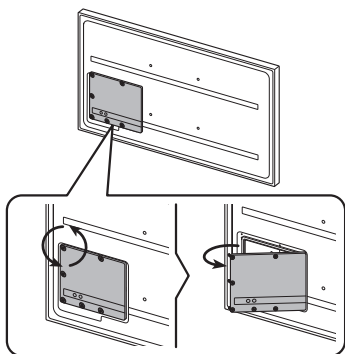
## Media Bay

- The Terrace provides space (Media Bay) to install Media Players where Weather-Resistant is guaranteed on the rear of the product.
- The media player listed below can be installed on the rear space (Media Bay) of the product.
  - Media player: Amazon Fire Stick, Google Chromecast, Roku Ultra Streaming M Player
- Make sure to close the cover and fasten the screws to ensure it is water tight. (Use the provided screws. Otherwise, it may cause problems such as improper Weather-Resistant.)
- We are not responsible for any personal injury or damage to the product that occurs when users install the product.

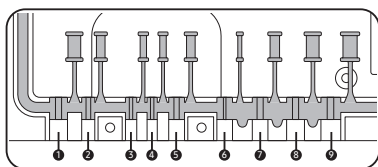
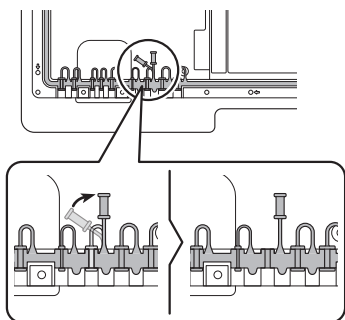
Media Bay Dimensions (W x H x D)	8.3 x 10.6 x 1.0 inches (210.0 x 270.0 x 25.0 mm)
Media player Installation space (W x H x D)	5.5 x 7.9 x 1.0 inches (140.0 x 200.0 x 25.0 mm)

## Before connecting cables

1. Unfasten the screws, then open the cover.



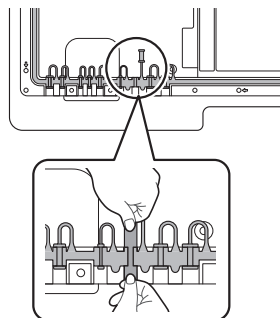
2. Remove the appropriate silicone bar for the thickness of the cable to connect.



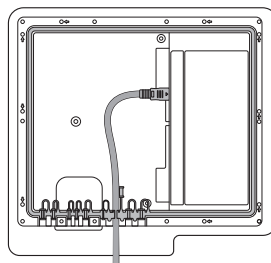
Different hole sizes and corresponding cable thickness for each:

Position	1	2	3	4	5
Cable diameter (Φ mm)	Φ 7.0	Φ 4.0	Φ 3.0	Φ 3.0	Φ 5.5
Position	6	7	8	9	
Cable diameter (Φ mm)	Φ 1.6	Φ 5.5	Φ 7.0	Φ 8.0	

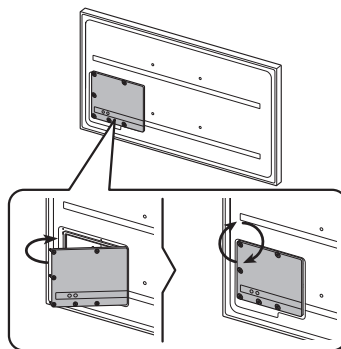
3. Insert the appropriate cable into the hole from which the silicone bar was removed.



4. The cable should be connected as shown.



5. Close the cover, then fasten the screws.
    - After all the cables are connected, make sure to close the cover and fasten the screws to ensure it is water tight. (Use the provided screws. Otherwise, it may cause problems such as improper Weather-Resistant.)
- Recommended torque : 2.5 - 3.5 kgf.cm



## Durability

- The TV provides the robust durability by IP56 so that it can be used in outdoor environment (when installed and used as per the instructions in this Simple User Guide).
- The remote control of this product provides durability by IP56.

Protection against solids	IP		Protection against water
	5	6	
No protection	0	0	No protection
Solids > 50 mm	1	1	Vertically falling water
Solids > 12 mm	2	2	Vertically water - enclosure tilted 15°
Solids > 2.5 mm	3	3	Sprayed water 60° from vertical
Solids > 1.0 mm	4	4	Splashed water from all directions
Dust Protected	5	5	Hosing jets from all directions
Dust tight	6	6	Strong hosing jets from all directions
-		7	Temporary Immersion: 1 m for 30 minutes
-		8	Immersion: manufacturer defined depth and time


Despite the IP56 ratings, your TV and remote control are not impervious to water damage in any situation. To help prevent damage to your products, avoid the products being subjected to:

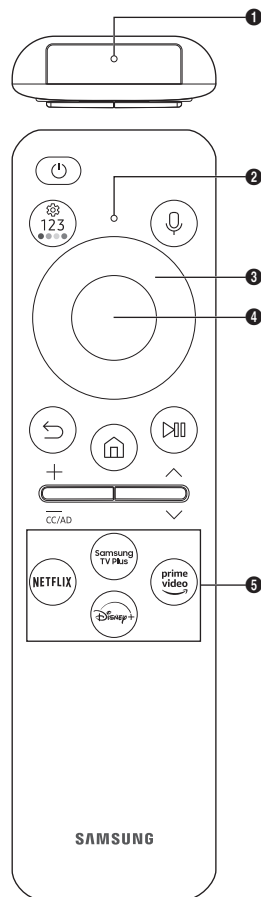
- Water projected by a source greater than 12.5 mm against enclosure from any direction or submersion in water.
- Water projected at greater than 100 KPa (14.5 PSI) with a water volume greater than 100 litres/minute for more than 3 minutes and extreme weather conditions.

If you have purchased or been provided a Dust Cover, be sure to put the Dust Cover on the TV whenever the TV is not in use for an extended period of time.

The Dust Cover will help prevent dust, dirt, and more from accumulating on the TV. Please refer to the guide provided with the Dust Cover for installation/usage guidelines.

## 03 About the Buttons on the Samsung SolarCell Remote (Samsung Smart Remote)

- To activate the Samsung Smart Remote, press  on it. (This is required only when using it for the first time.)



For battery recycling go to [call2recycle.org](http://call2recycle.org); or call 1-800-822-8837



### (Power)

Press to turn the TV on or off. Press and hold to turn off the TV completely.

### MIC

Used as MIC when using voice recognition with the remote control.

- Do not impact the MIC hole or use a sharp object to poke into the hole.

### LED

When charging the remote control via the USB port, the LED is lit if charging is in progress. When charging is complete, the LED is turned off.

### (Voice Assistant)

Runs Voice Assistant. Press and hold the button, say a command, and then release the button to run Voice Assistant.

- The supported Voice Assistant's languages and features may differ by geographical region.

⚠ Keep the remote more than 0.6 inches (15.24 mm) from your face when using and speaking to Voice Assistant through the mic on the remote.

### (Settings - Number - Color button)

You can access Settings menu / virtual numeric pad / Color buttons / Option pad / SmartThings app directly.

- Accessing the SmartThings app using this button may not be supported, depending on the model.
- Use this button to access additional options that are specific to the feature in use.
- Press to bring up the virtual numeric pad on the screen. Use the numeric keypad to enter numeric values. Select numbers and then select **Done** or **Enter Number** to enter a numeric value. Use to change the channel, enter a PIN, enter a ZIP code, etc.

### Directional button (up, down, left, right)

Use to navigate the menu or move the focus to highlight items on the Home Screen.

### Select

Selects or runs a focused item. When pressed while you are watching content, detailed program information appears.

### (Return)

Press to return to the previous menu. When pressed for 1 second or more, the running function is terminated. When pressed while you are watching a program, the previous channel appears.

### (Smart Hub)

Press to return to the Home Screen.

### (Play/pause)

When pressed, the playback controls appear. Using these controls, you can control the media content that is playing. To use Game Bar, press and hold the button in **Game Mode**.

- Game Bar may not be supported depending on the model or geographical area.

### + / - (Volume)

Move the button up or down to adjust the volume. To mute the sound, press the button. When pressed for 2 seconds or more, the **Accessibility Shortcuts** appears.

### ^ / v (Channel)

Move the button up or down to change the channel. To see the **Guide** screen, press the button. When pressed for 1 second or more, the **Channel List** screen appears.



Press and hold the button up or down to quickly change the channel.

### Launch app button

Launch the app indicated by the button.

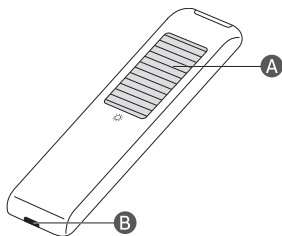
- Available apps may differ depending on the geographical area or contents provider.

### + (Pairing)

If the Samsung Smart Remote does not pair to the TV automatically, point it at the front of the TV, and then press and hold the  and  buttons simultaneously for 3 seconds or more.

- Use the Samsung Smart Remote less than 20 feet (6 m) from the TV. The usable distance may vary with the wireless environmental conditions.
- The images, buttons, and functions of the Samsung Smart Remote may differ with the model or geographical area.
- The Universal Remote function operates normally only when you use the Samsung Smart Remote that comes with the TV.

## Charging the battery



### **A** Solar Cell

Expose to light when the remote is not in use. This will extend the remote's operating time.

### **B** USB port (C-type) for charging

Used for quick charging. The LED on the front will light when charging. When the battery is fully charged, the LED will turn off.

- The USB Cable is not provided.
- It is recommended to use an original Samsung charger. Otherwise, it may cause performance degradation or failure of the product. In this case, the warranty service is not applicable.
- When the remote control does not work due to low battery, charge it by using the USB-C type port.

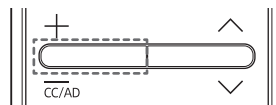


Fire or explosion may occur, resulting in damage to the remote control or personal injury.

- Do not apply shock to the remote control.
- Be careful not to let foreign substances such as metal, liquid, or dust come in contact with the charging terminal of the remote control.
- When the remote control is damaged or you smell smoke or burning fumes, immediately stop operation and then repair it at the Samsung service center.
- Do not arbitrarily disassemble the remote control.
- Be careful not to let infants or pets suck or bite the remote control. Fire or explosion may occur, resulting in damage to the remote control or personal injury.

## Using Accessibility Functions

The **Accessibility Shortcuts** button on your remote provides easy access to the accessibility functions on your TV.



- Press and hold the Volume button to display the **Accessibility Shortcuts** menu.
- Some functions may not appear depending on the access method.
- These function may not be supported depending on the model or geographical area.

\* CC/VD works the same as CC/AD. The marked name can be changed to CC/AD.

### Voice Guide

You can activate voice guides that describe the menu options aloud to aid the visually impaired. To activate this function, set **Voice Guide** to **On**. With Voice Guide on, the TV provides voice guides for channel change, volume adjust, information on current and upcoming programs, schedule viewing, other TV functions, various content in the Web Browser, and in **Search**.

- You can configure the volume, speed, pitch, and level of the **Voice Guide**.
- The **Voice Guide** is provided in the language that is specified on the **Language** screen. **English** is always supported. However, some languages are not supported by **Voice Guide** even though they are listed in the **Language** screen.

### Audio (Video) Description

You can activate an audio guide that provides an audio description of video scenes for the visually impaired. This function is only available with broadcasts that provide this service.

### Audio Subtitles

This feature audibly reads captions displayed on video content. You can change the volume or speed of audible captions.

### Picture Off

Turn off the TV screen and provide only sound to reduce overall power consumption. When you press any button on the remote control with the screen off, the TV screen is returned to on.

### Magnification

Enlarge the screen to make the picture or text bigger. You can adjust the zoom level or move the zoom area.

## High Contrast

You can change major service screens to white text on a black background or change the transparent TV menus to opaque so that text can be more easily read. To activate this function, set **High Contrast** to **On**.

## Relumino Mode

This feature increases the contrast and brightness of the screen and emphasizes the outlines of images, so that viewers with low vision can see the screen more clearly.

## Together Mode

Shows the screen displayed when **Relumino Mode** is turned on and the screen displayed when the mode is turned off, side by side simultaneously.

## Zoom Menu and Text

You can enlarge the size of the font on the screen. To activate, set **Zoom Menu and Text** to **On**.

## Grayscale

You can change the color of the TV screen to a black and white tone to sharpen blurred edges caused by colors.

- If **Grayscale** is on, some **Accessibility** menus are not available.

## Color Inversion

You can invert the colors of the text and background for the setting menus displayed on the TV screen to make it easier to read them.


- If **Color Inversion** is on, some **Accessibility** menus are not available.

## SeeColors Mode

This feature helps users with color blindness experience richer colors.

Use this feature to customize the colors for your unique viewing conditions, to experience richer colors on the screen.

## Learn TV Remote

This function helps individuals with a visual impairment to learn the positions of the buttons on the remote control. When this function is activated, you can press a button on the remote control and the TV will tell you its name. Press the  (**Return**) button twice to exit **Learn TV Remote**.

## Learn Menu Screen

Learn the menus on the TV screen. Once enabled, your TV will tell you the structure and features of the menus you select.

## Caption

Set **Caption** to **On** to watch programs with the captions displayed.

- Captions are not displayed by programs that do not support captions.
- This function has no relationship with the features for controlling subtitles of DVD or Blu-ray players. To control DVD or Blu-ray subtitles, use the subtitle feature of the DVD or Blu-ray player and the player's remote control.

## Auto Caption Position

Automatically adjust the caption position.

## Separate Closed Caption

You can display the caption in the area separated from the broadcast screen.

## Sign Language Zoom

You can zoom in the sign language screen when the program you are watching provides it. First, set **Sign Language Zoom** to **On**, and then select **Edit Sign Language Zoom** to change the position and magnification of the sign language screen.

## Sign Language Guide

Provides a description of menu items with sign language.

## Learn Gesture Functions

Check out how to use Gesture functions.

## Multi-output Audio

You can turn on the TV speaker and a Bluetooth device at the same time. When this function is active, you can set the volume of the Bluetooth device higher than the volume of the TV speaker.

## Slow Button Repeat

You can configure the operation speed of the remote control buttons so that they slow down when you continually press and hold them. Set **Slow Button Repeat** to **On**.

## Auto Menu Sort

Automatically sorts your frequently used menu items.

## 04 Initial Setup

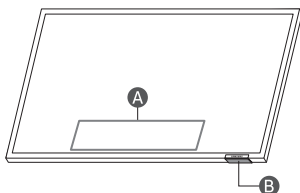
When you turn on your TV for the first time, it immediately starts the Initial Setup. Follow the instructions displayed on the screen and configure the TV's basic settings to suit your viewing environment.

- You will need a Samsung Account to access our network-based smart services. If you choose not to log in, you will only get a connection to terrestrial TV (applicable to devices with tuners only) and external devices, e.g. via HDMI.

### Using the TV Controller

You can turn on the TV with the **TV Controller** button at the bottom of the TV, and then use the **Control menu**. The **Control menu** appears when the **TV Controller** button is pressed while the TV is On.

- The screen may dim if the protective film on the SAMSUNG logo or the bottom of the TV is not removed. If protective film is attached, remove the film.



**A** Control menu

**B** TV Controller button / Remote control sensor

## 05 Connecting the HDBase-T

HDBase-T connection of The Terrace is built-in for transmission of audio and video data. It does not support transmission of power, Ethernet and control signals including IR and RS232.

- Up to HDMI 1.4 is supported.
- CEC does not operate when the TV is Off.

### General

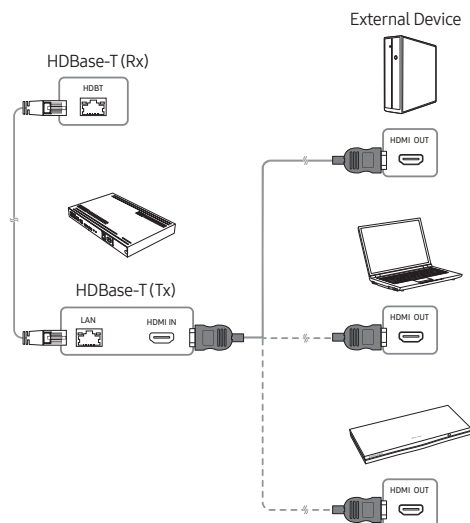
- The appearance may differ depending on the product.
- Connecting parts may differ in different products.
- Data transmission is not available if HDBase-T (Rx) is connected to HDBase-T (Tx) through a hub.
- While installing the product, be sure to use the cables and TX devices certified by the HDBase-T Alliance.
- When connecting an external device via HDBase-T, for the maximum resolution, use a certified TX device that supports 4K 30 Hz.
- This port (HDBT port on the TV) does not support ARC (eARC).

### Guidelines for connection

- HDBase-T (Tx) transmits data from an external device to HDBase-T (Rx). Only 1:1 connection is available between devices. Make sure to connect them via a LAN (CAT6 or higher quality) cable.
- HDBase-T works with unshielded twisted pair (UTP) or shielded twisted pair (STP) cables; but, to ensure CE compliance, STP cables and STP Connectors are required. STP cable and connectors are recommended to safeguard against unpredictable environmental electrical noise which may impact performance. It is recommended to use an STP cable to maximize performance. Using a UTP cable or patch may decrease performance.
- Before replacing the external device, first remove the HDBT LAN (CAT6 or higher quality) cable.
- For HDBT signal stability, please use CAT6 or higher quality cables are Certified by HDBaseT.
- Do not use CAT5E cables even though the cables are Certified by HDBaseT.

### Constraints

- When connecting an external device via HDBase-T, there may be restrictions during communication between devices.
- When connection a gaming device via HDBase-T, the related functions and screen resolution may not be supported smoothly.



## 06 Using the Cold Weather Mode

 >  (left directional button) >  Settings > All Settings >

General & Privacy > System Manager > Cold Weather Mode

Outdoor TV provides an optimal viewing experience under 32 °F (0 °C) to 122 °F (50 °C).

- In low temperature below 50 °F (10 °C), motion blur may occur due to liquid crystal characteristics.
- To view the TV under low temperature below 50 °F (10 °C), you can use the **Cold Weather Mode** for stable startup.
- **Cold Weather Mode** keeps the startup stable by operating the TV backlight when the weather is very cold.
- When **Cold Weather Mode** is active, be sure to keep the power supply connected.
- Even in standby mode for **Cold Weather Mode**, power may be consumed as follows:
  - 55": MAX 210 W, 65": MAX 280 W, 75": MAX 350 W
- **Cold Weather Mode** operates in standby and the screen may appear gray.

### High-Temperature protection

- At the temperature above 113 °F (45 °C), the TV brightness may be lowered to protect the product. This option works regardless of **Cold Weather Mode** activation.

### Sunlight Protection

- When surrounding brightness level is over 20,000 lux for 5 minutes in a row, the luminance may be lowered to protect the TV screen.

## 07 Using the Adaptive Picture

 >  (left directional button) >  Settings > All Settings >

General & Privacy > Intelligent Mode Settings > Adaptive Picture

Optimizes brightness and provides the best picture quality in real time, based on the lighting condition and the content you're viewing.

- The **Adaptive Picture** in The Terrace automatically optimizes **Brightness** and **Contrast** in real time, making the content you are currently watching the best quality even in bright or dark conditions.


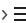
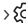
## 08 Troubleshooting and Maintenance

### Troubleshooting

For more information, refer to "Troubleshooting" in the User guide.

 >  (left directional button) >  Settings > Support > Open User guide > Troubleshooting




If none of the troubleshooting tips apply, please visit "www.samsung.com" and click Support or contact the Samsung service center.

- This panel is made up of sub pixels which require sophisticated technology to produce. There may be, however, a few bright or dark pixels on the screen. These pixels will have no impact on the performance of the product.
- To keep your TV in optimum condition, upgrade to the latest software. Use the **Update Now** or **Auto Update** functions on the TV's menu ( >  (left directional button) >  Settings > Support > Software Update > Update Now or Auto Update).

#### The TV won't turn on.

- Make sure that the power cord is securely plugged into the product and the wall outlet.
- Make sure that the wall outlet is working and the remote control sensor at the bottom of the TV is lit and glowing a solid red.
- Try pressing the **TV Controller** button at the bottom of the TV to make sure that the problem is not with the remote control. If the TV turns on, refer to "The remote control does not work."


#### The remote control does not work.

- Check if the remote control sensor at the bottom of the TV blinks when you press the  button on the remote control.
  - When the remote's battery is discharged, charge the battery using the USB charging port (C-type), or turn over the remote to expose the solar cell to light.
- Try pointing the remote directly at the TV from 5 ft. to 6 ft. (1.5-1.8 m / 150-180 cm) away.
- If your TV came with a Samsung Smart Remote (Bluetooth Remote), make sure to pair the remote to the TV. To pair a Samsung Smart Remote, press the  and  buttons together for 3 seconds.

### Eco Sensor and screen brightness

Eco Sensor adjusts the brightness of the TV automatically. This feature measures the light in your room and optimizes the brightness of the TV automatically to reduce power consumption.

If you want to turn this off, go to  >  (left directional button) >

 Settings > All Settings > General & Privacy > Power and Energy Saving > Brightness Optimization.

- The eco sensor is located at the bottom of the TV. Do not block the sensor with any object. This can decrease picture brightness.

## 09 Specifications and Other Information

### Specifications

Model Name	QN55LST7D	QN65LST7D
Display Resolution	3840 x 2160	3840 x 2160
Screen Size		
Diagonal	55" Class	65" Class
Measured Diagonally	54.6 inches	64.5 inches
Sound (Output)	40 W	40 W
Dimensions (W x H x D)		
Body	49.1 x 28.4 x 2.7 inches (1247.4 x 720.9 x 69.8 mm)	57.7 x 33.2 x 2.7 inches (1466.3 x 844.0 x 69.8 mm)
Weight		
Body	61.5 lbs (27.9 kg)	79.4 lbs (36.0 kg)
Model Name	QN75LST7D	
Display Resolution	3840 x 2160	
Screen Size		
Diagonal	75" Class	
Measured Diagonally	74.5 inches	
Sound (Output)	40 W	
Dimensions (W x H x D)		
Body	66.6 x 38.4 x 2.7 inches (1692.0 x 974.5 x 69.8 mm)	
Weight		
Body	106.0 lbs (48.1 kg)	
Operating Temperature	-24 °F to 122 °F (-31 °C to 50 °C)	
Operating Humidity	10 % to 80 %, non-condensing	
*Storage Temperature	-24 °F to 122 °F (-31 °C to 50 °C)	
Storage Humidity	5 % to 95 %, non-condensing	

\*: When the temperature is -4 °F to -24 °F (-20 °C to -31 °C), it is mandatory to store the TV inside with complete packaging or apply power and activate the **Cold Weather Mode**.

#### Notes

- This device is a Class B digital apparatus.
- For information about the power supply, and more information about power consumption, refer to the information on the label attached to the product.
  - On most models, the label is attached to the back of the TV. (On some models, the label is inside the cover terminal.)
- To connect a LAN cable, use a CAT 7 (\*STP type) cable for the connection. (100/10 Mbps)
  - \* Shielded Twisted Pair
- When the temperature is out of Operating Temperature / Storage Temperature range, please store the TV inside with complete packaging to protect the product.

\* Figures and illustrations are provided for reference only and may differ from the actual product appearance.

Product design and specifications may change without notice.

### Decreasing power consumption

When you shut the TV off, it enters Standby mode. In Standby mode, it continues to draw a small amount of power. To decrease power consumption, unplug the power cord when you don't intend to use the TV for a long time.

This page is intentionally  
left blank.

# SAMSUNG

Contact SAMSUNG WORLD WIDE  
If you have any questions or comments relating to Samsung products, please contact the Samsung service center.

Country/Region	Samsung Service Center ☎	Website	Address
CANADA	1-800-SAMSUNG (726-7864)	<a href="http://www.samsung.com/ca/support">www.samsung.com/ca/support</a> (English) <a href="http://www.samsung.com/ca_fr/support">www.samsung.com/ca_fr/support</a> (French)	Samsung Electronics Canada Inc. 2050 Derry Road West Mississauga, Ontario L5N 0B9 Canada
U.S.A	1-800-SAMSUNG (726-7864)	<a href="http://www.samsung.com/us/support">www.samsung.com/us/support</a>	Samsung Electronics America, Inc. 85 Challenger Road Ridgefield Park, NJ 07660

Accessibility contact information in U.S.A. : [accessibility@sea.samsung.com](mailto:accessibility@sea.samsung.com)

Scan the QR code to view our helpful how-to videos (USA Only)



Scan this QR code with your smart phone to see helpful videos.

If you experience issues, please do not take the TV back to the store.  
In the United States of America, call us at 1-800-SAMSUNG (1-800-726-7864) or visit us at [www.samsung.com](http://www.samsung.com) or [www.samsung.com/spn](http://www.samsung.com/spn) for support and warranty service.

