

JennAir® NOIR™ 30" Speed Oven JOEMC130RM



Features

Speed Cook

Three potent cooking methods converge to deliver an oven-caliber bite: steady convection baking, microwave speed and intense broiler caramelization.

7.8 Full Color Ultra Wide LCD Display

Visually vibrant. This highly interactive, full-color LCD display allows you to navigate effortlessly through settings and the algorithms of JennAir® Culinary Center recipes.

Smart Microwave Oven

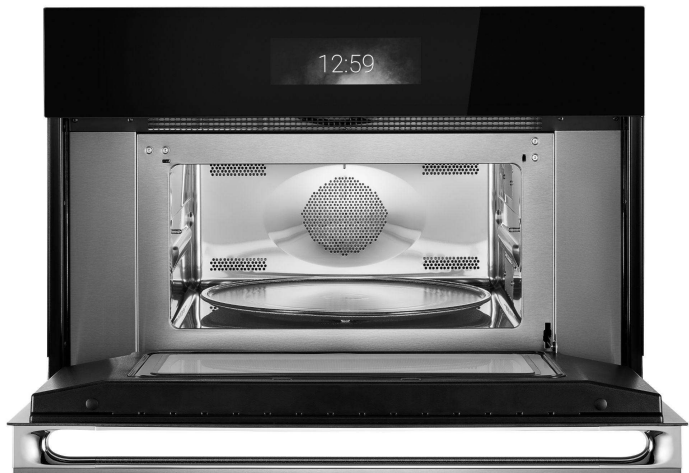
Skillfully control your microwave—whether prepping in the kitchen or soaking in your clawfoot tub. The JennAir® app empowers you to remotely control and monitor the microwave,* and prompts you when it's time to attend to your dish. Tap into chef-inspired recipes designed to create effortlessly delicious results, or use simple voice commands with your Google Assistant and Alexa-enabled devices.

Convection & Microwave Combination Cooking

Let your appetite run wild—broil, bake or warm with convection and microwave energy.

Stainless Steel Microwave Interior

Wrapped in luminous steel, intrinsic beauty is reflected in every corner.



Accessories

W10587374	Microwave Baking Tray
-----------	-----------------------

Product Details

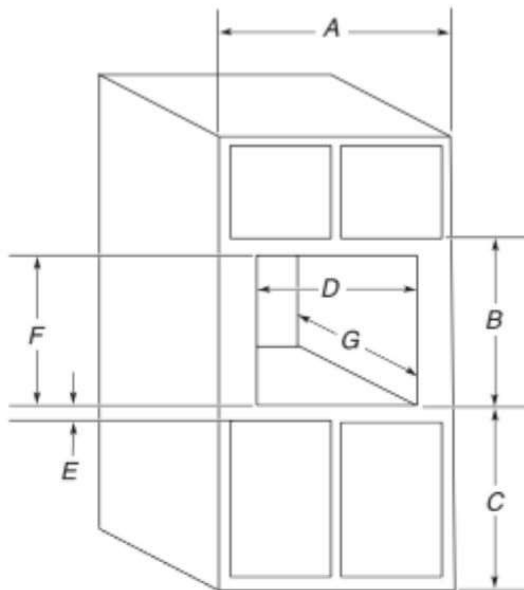
Dimensions	29.7" W x 19.9"H x 25.5"D
Cutout Dimensions <i>Flush Inset Install</i>	28 ½" W x 17 ⅝" H x 21 ⅞"D
Capacity	1.4 Cu Ft
Convection	Yes

JennAir® NOIR™ 30" Speed Oven

JOEMC130RM



Standard Cutout

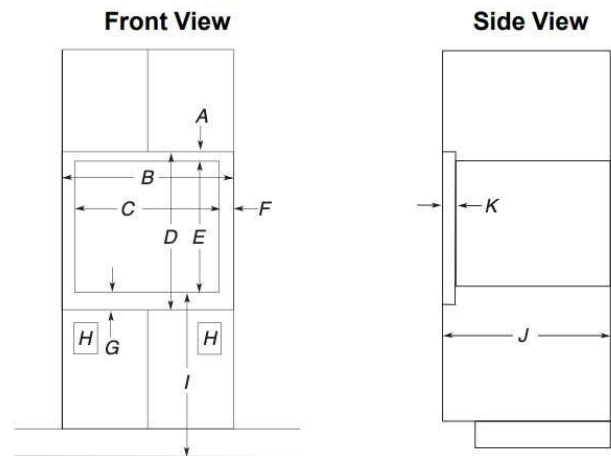


30" (76.2 cm) models

- A. 30" (76.2 cm) minimum cabinet width
- B. 19¹³/₁₆" (50.3 cm) from bottom of cutout to bottom of upper cabinet door
- C. 40" (101.6 cm) bottom of cutout to floor (recommended)
- D. 28¹/₂" (72.4 cm) cutout width
- E. 1¹/₂" (3.8 cm) minimum bottom of cutout to top of cabinet door
- F. 17⁵/₈" (44.7 cm) recommended cutout height (will fit cutout height from 17³/₈" [44.1 cm] to 17³/₄" [45.1 cm])
- G. 21⁷/₈" (55.5 cm) minimum cutout depth

Flush Cutout

A 23¹/₄" (59.0 cm) minimum cutout depth is required. These dimensions will result in a 1/4" (6 mm) reveal on the top, a 1/4" (6 mm) reveal on the sides, and a 1/8" (3 mm) reveal on the bottom of the microwave oven. The front face of the cleats and platform will be visible and should be treated as a finished surface.



30" (76.2 cm) Models

- A. 1¹³/₁₆" (4.7 cm) top cleat*
- B. 30¹/₄" (76.8 cm) minimum width of flush inset cutout
- C. 28¹/₂" (72.4 cm) minimum width of opening
- D. 20³/₁₆" (51.3 cm) minimum height of flush inset cutout
- E. 17⁵/₈" (44.7 cm) recommended cutout height
- F. 11¹/₁₆" (1.7 cm) side cleat*
- G. 3/4" (1.9 cm) bottom cleat*
- H. Recommended junction box location
- I. 40" (101.6 cm) bottom of cutout to floor (recommended)
- J. 23¹/₄" (59.0 cm) minimum depth of cutout
- K. 1³/₈" (3.5 cm) recess from front of cabinet

*Cleats must be recessed 1³/₈" (3.5 cm) from the front of the cabinet.

Electrical

To properly install your microwave oven, you must determine the type of electrical connection you will be using and follow the instructions provided for it here.

- Microwave oven must be connected to the proper electrical voltage and frequency as specified on the model/serial/rating plate. The model/serial/rating plate is located underneath the control panel along the oven vent.

- The microwave oven rated 120/240 V, 20 A, has 4 wires (L1, L2, N, and G) in the flex conduit, and should be connected to a 20 A maximum-rated circuit, overcurrent protected on both the L1 and L2 circuits.

For power requirements, refer to the following table:

Voltage	Microwave With Convection Oven
240 VAC	19.9 A/3250 W
208 VAC	19.9 A/3250 W

Resources

[Owner's Manual & Install Instructions](#) [Quick Start Guide](#) [Warranty](#)