

JennAir® RISE™ 30" Double Wall Oven with V2™ Vertical Dual-Fan Convection

JOEDC730RL



Features

V2™ Vertical Dual-Fan True Convection with Advanced Temperature Precision

Dual counter-rotating vertical fans work in tandem to circulate heated air from the two 3,400-watt elements around the top and bottom racks. The two fans drive the air throughout the cavity where you need it most for flaky bakery-style pastries, caramelized roasted vegetables and to transform marbled meats into succulent roasts.

7.8 Full Color Ultra Wide LCD Display

Visually vibrant. This highly interactive, full-color LCD display allows you to navigate effortlessly through settings and the algorithms of JennAir® Culinary Center recipes.

Smart Wall Oven

Fluently control your wall oven—whether in the kitchen or not. The JennAir® App empowers you to remotely control and monitor the oven, prompts you when it's time to tend to your dish or you can select from chef-inspired recipes designed to provide you with effortlessly delicious results. Use simple voice commands with your Google Assistant or Alexa-enabled device* for an even more seamless cooking experience.

Air Fry

Achieve crispy, yet juicy results on your favorites, from fresh vegetables to guilty-pleasure fried foods. Use Air Fry to circulate hot air around the tray to crisp food using little to no additional oil.

Quieter than the Leading Luxury Wall Oven Brand

Accessories

W10123240	Premium Broiler Pan and Roasting Rack
W11242906	FLAT RACK, JA 30"
W11256305	ROLLING RACK, JA,30"
W11369884	Range Bottom Vent Trim Kit



Product Details

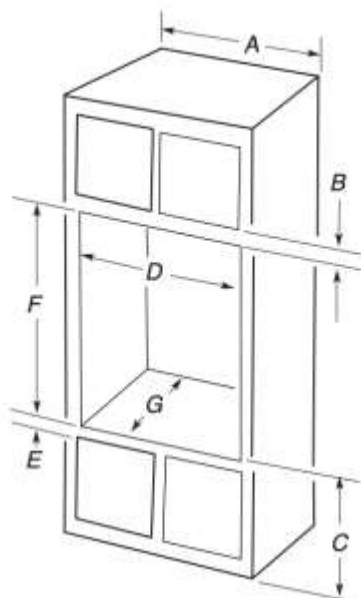
Dimensions	29¾" W x 53" H x 26 ⅜" D
Cutout Dimensions <i>Flush Inset Install</i>	30¼" W x 53 3/16" H x 25" D
Capacity	10.0 Cu Ft
Convection	V2™ Vertical Dual-Fan
Install Under Cooktop	Yes
Energy Rating	413 kWh

JennAir® RISE™ 30" Double Wall Oven with V2™ Vertical Dual-Fan Convection

JOEDC730RL



Standard Cutout



30" (76.2 cm) models

- A. 30" (76.2 cm) minimum cabinet width
- B. $2\frac{3}{16}$ " (5.5 cm) top of cutout to bottom of upper cabinet door
- C. $14\frac{3}{4}$ " (37.5 cm) bottom of cutout to floor is recommended.
 $7\frac{1}{2}$ "- $14\frac{3}{4}$ " (19-37.5 cm) bottom of cutout to floor is acceptable.
- D. $28\frac{1}{2}$ " (72.4 cm) minimum cutout width
- E. $1\frac{1}{2}$ " (3.8 cm) minimum bottom of cutout to top of cabinet door
- F. $50\frac{1}{4}$ " (127.6 cm)* recommended cutout height
- G. 24" (60.7 cm) cutout depth

***NOTE:** The cutout height can be between 50" and $52\frac{3}{16}$ " (127 cm and 132.6 cm) for double ovens.

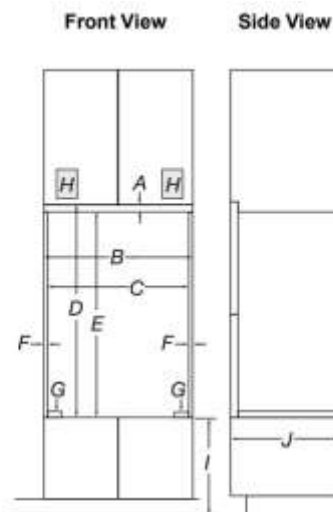
NOTE: Contact service to get tall bottom vent shield for cutouts taller than $50\frac{3}{8}$ " (128 cm) to enhance installation.

Flush Cutout

NOTE: This is an alternate option to install your product in the cabinet and obtain a flush look. For standard installation, refer section "Cabinet Dimensions - Double Ovens, Standard Installation".

A $25\frac{3}{8}$ " (64.4 cm) minimum cutout depth is required.

Top and bottom gaps will be $\frac{1}{8}$ " (0.3 cm) gap above and below the product. Top and bottom gaps not required for installation. Exposed areas of the cabinet should be finished to match.



30" (76.2 cm) Models

- A. $\frac{3}{4}$ " (1.9 cm) top cleat*
- B. $30\frac{1}{4}$ " (76.8 cm) minimum width of flush inset cutout
- C. $28\frac{7}{8}$ " (73.3 cm) minimum width of opening
- D. $53\frac{3}{16}$ " (135 cm) minimum height of flush inset cutout
- E. $52\frac{3}{8}$ " (133.1 cm) recommended cutout height
- F. $11\frac{1}{16}$ " (1.7 cm) side cleat*
- G. $\frac{1}{4}$ " (0.6 cm) recommended with foot. $15\frac{1}{16}$ " to $1\frac{1}{16}$ " (2.2-2.7 cm) allowable without foot*
- H. Recommended junction box location
- I. $7\frac{1}{2}$ "- $14\frac{3}{4}$ " (19-37.5 cm) bottom of cutout to floor
- J. 25" (63.5 cm) minimum depth of cutout

*Cleats and spacers must be recessed $\frac{1}{8}$ " (3.5 cm) from the front of the cabinet.

Electrical

- Electrical supply junction box should be located 3" (7.6 cm) maximum above the top enclosure surface when the oven is installed in a wall cabinet. A 1" (2.5 cm) minimum diameter hole should have been drilled in the right rear or left rear corner of the top enclosure surface to pass the appliance cable through to the junction box.

NOTE: For undercounter installation, it is recommended that the junction box be located in the adjacent right or left cabinet and a deflector assy must be installed. If you are installing the junction box on rear wall behind oven, it is recommended that the junction box be recessed and located in the upper center of the cabinet.

- Models rated from 7.3 to 9.6 kW at 240 V (5.4 to 7.4 kW at 208 V) require a separate 40 A circuit. Models rated at 4.8 kW and below at 240 V (3.6 kW and below at 208 V) require a separate 20 A circuit.
- Oven must be connected to the proper electrical voltage and frequency as specified on the model/serial/rating plate. The model/serial/rating plate is located under the control panel on single ovens and under the control panel on the upper oven cavity on double ovens.

Resources

[Owner's Manual & Install Instructions](#)

[Quick Start Guide](#)

[Warranty](#)