

24" Built In Wine Cellar (Right or Left Swing)

JBWFNR/L24RX



Features

Meticulously Engineered to Protect Wine
Get unparalleled preservation with consistent temperatures, consistent humidity control, anti-vibration technology and advanced UV protection through Ambra Lighting and UV barrier glass that helps filter out ultraviolet light.

UV-Protective Ambra Lighting
Guarded by the dual forces of Ambra Lighting and advanced UV barrier glass, our wine columns naturally ward off harmful UV rays to ensure your collection matures gracefully. Close the door to activate preservation mode, which floods the entire cavity with the protective, yet subtle glow of Ambra Lighting.

Precise Fit Wine Racks
Show off your collection in style with a robust rack design and contours. From Bordeaux to Alsace, the Soft Glide wine racks can accommodate any collector's needs.

Presenter's Platform
Luxuriously display three wines alongside your finest stemware. The Presenter's Platform is a statement piece for the artful connoisseur, where form meets function in luxurious harmony.

Daring Obsidian Finish Interior
Draw attention to your wine collection in high-contrast style. Inspired by volcanic glass, this industry-exclusive dark finish helps display wines like fine art.



Product Details

Dimensions	23.78"W X 24.02"D x 83.46"H
Cavity Finish	Obsidian
Bottle Capacity	63 Bottles Up to 72 with Accessory Shelves
Lighting	White LED when Open Ambra Lighting when Closed
Racks	Oak Diamond-Shaped Dowels

Preservation

Cooling Zones	2 Zones: 39-64°F Range
Temp Swing	± 1°C
UV Protection	Ambra Lighting UV Protective Glass
Vibration Control	Detached Variable Capacity Compressor
Rack Glides	Soft Close

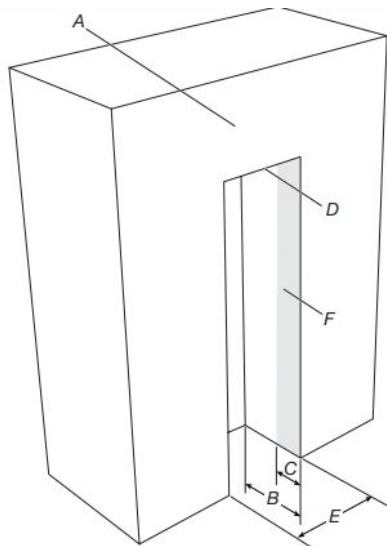
*Preliminary messaging claims and imagery, subject to change

24" Built In Wine Cellar (Right or Left Swing)

JBWFNR/L24RX

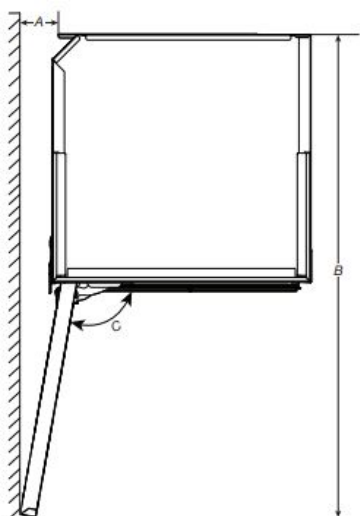


Cutout Dimensions



- A. Soffit
- B. 25" (635 mm)
- C. 8" (203 mm)
- D. 14" (356 mm) Upper furniture return
- E. Wine Cellar Width 24" (610 mm)
- F. Furniture return

Door Swing Requirements



- A. Minimum distance from the wall (hinge side)
24" model: 4 $\frac{1}{4}$ " (108 mm)
- B. Door-Swing Clearance 24" model: 46 $\frac{3}{4}$ " (1187 mm)
- C. 105°

Panel & Join Kits

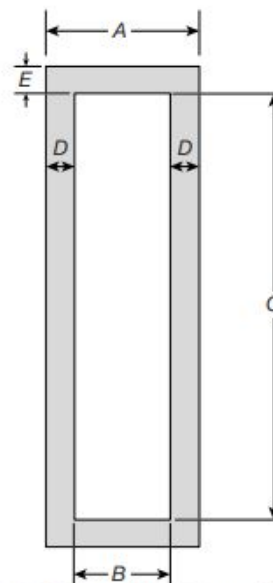
115 V, 60 Hz, AC only, 15A or 20A fused, grounded circuit is required.

A dedicated circuit is recommended.

Use an outlet that cannot be turned off by a switch.

Do not use an extension cord.

Custom Panel Dimensions



- A. 23 $\frac{3}{4}$ " (604 mm) for 24" model
- B. 12 $\frac{1}{2}$ " (326 mm) for 24" model
- C. 62" (1575 mm)
- D. 5 $\frac{1}{2}$ " (139 mm)
- E. 7 $\frac{1}{8}$ " (200 mm)

Panels can have thickness ranging between $\frac{3}{4}$ " (19 mm) and 1 $\frac{1}{8}$ " (28 mm).

IMPORTANT: Custom wood panels must have a minimum of $\frac{3}{4}$ " (19 mm) material at all the hardware locations.

Maximum allowable door panel weight is 34 kg (75 lbs).

18" Built In Wine Cellar (Right or Left Swing)

JBWFNR/L18RX



Features

Meticulously Engineered to Protect Wine

Get unparalleled preservation with consistent temperatures, consistent humidity control, anti-vibration technology and advanced UV protection through Ambra Lighting and UV barrier glass that helps filter out ultraviolet light.

UV-Protective Ambra Lighting

Guarded by the dual forces of Ambra Lighting and advanced UV barrier glass, our wine columns naturally ward off harmful UV rays to ensure your collection matures gracefully. Close the door to activate preservation mode, which floods the entire cavity with the protective, yet subtle glow of Ambra Lighting.

Precise Fit Wine Racks

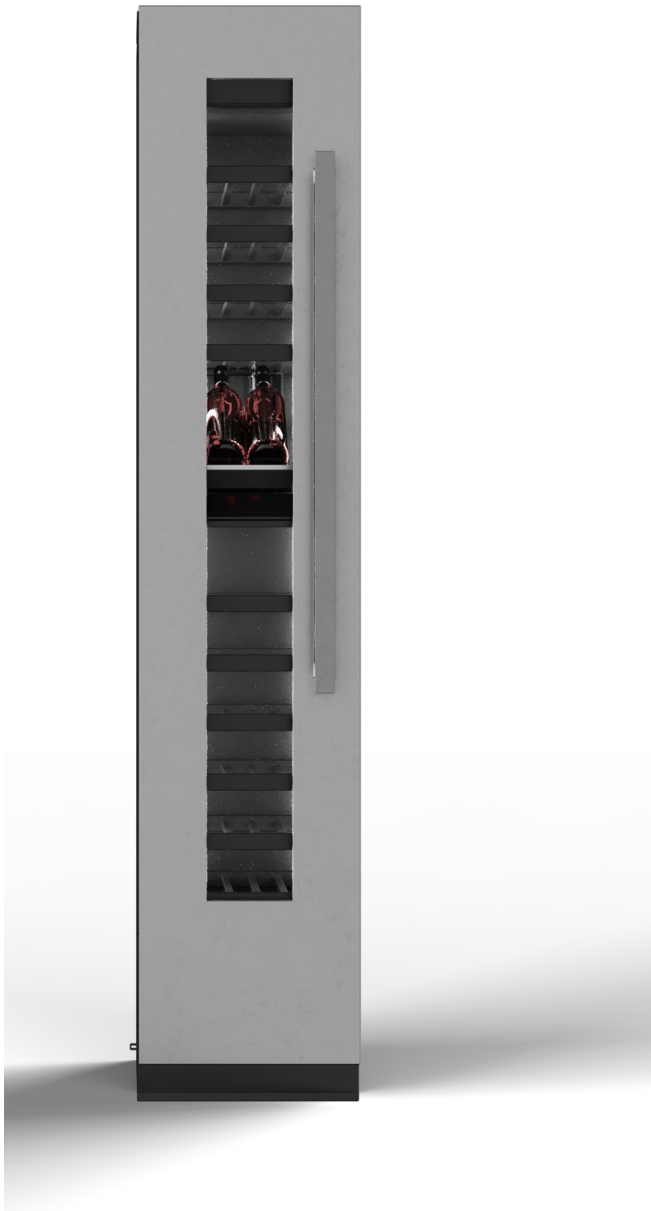
Show off your collection in style with a robust rack design and contours. From Bordeaux to Alsace, the Soft Glide wine racks can accommodate any collector's needs.

Presenter's Platform

Luxuriously display three wines alongside your finest stemware. The Presenter's Platform is a statement piece for the artful connoisseur, where form meets function in luxurious harmony.

Daring Obsidian Finish Interior

Draw attention to your wine collection in high-contrast style. Inspired by volcanic glass, this industry-exclusive dark finish helps display wines like fine art.



Product Details

Dimensions	17.78"W X 24.02"D x 83.46"H
Cavity Finish	Stainless - Design Agnostic
Bottle Capacity	42 Bottles Up to 48 with Accessory Shelves
Lighting	White LED when Open Ambra Lighting when Closed
Racks	Oak Diamond-Shaped Dowels

Preservation

Cooling Zones	2 Zones: 39-64°F Range
Temp Swing	± 1°C
UV Protection	Ambra Lighting UV Protective Glass
Rack Glides	Soft Close
Vibration Control	Detached Variable Capacity Compressor

*Preliminary messaging claims and imagery, subject to change

24" Built In Wine Cellar (Right or Left Swing)

JBWFNR/L24RX



Electrical

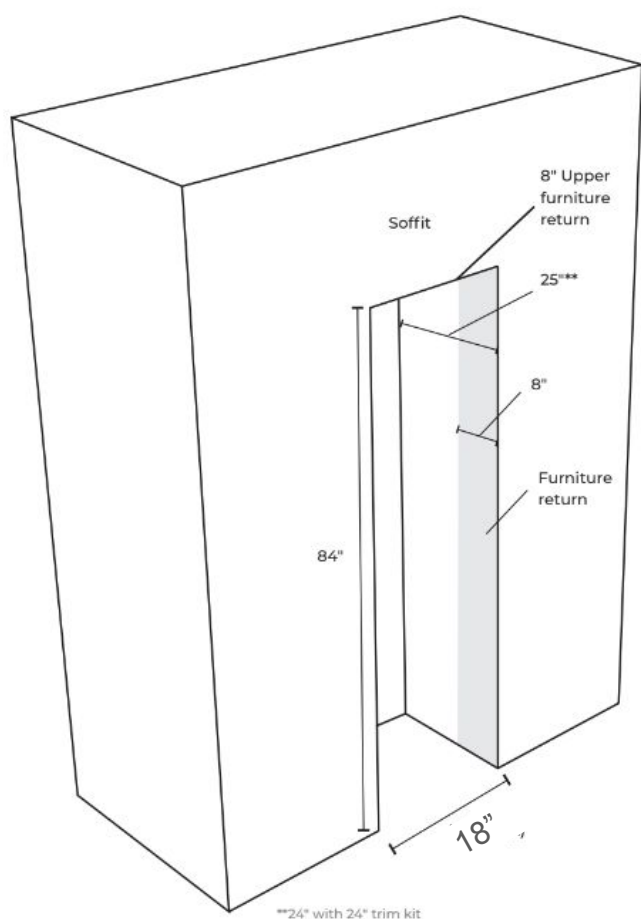
115 V, 60 Hz, AC only, 15A or 20A fused, grounded circuit is required.

A dedicated circuit is recommended.

Use an outlet that cannot be turned off by a switch.

Do not use an extension cord.

Cutout Dimensions



Custom Panels

Coming Soon

Stainless Steel Panels

Coming Soon

Join Kits

Coming Soon

Resources

[Owner's Manual](#)

[Dimensions](#)

[Quick Start Guide](#)