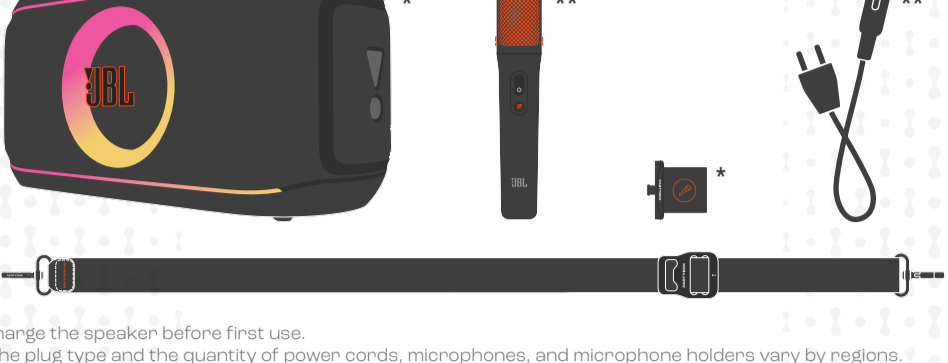


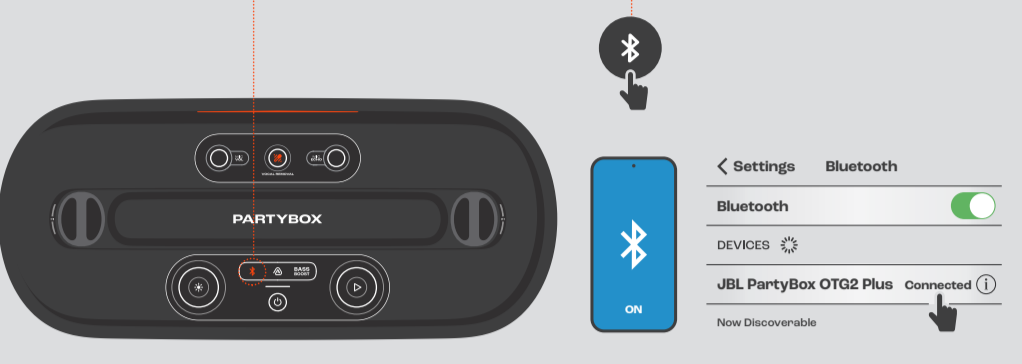


# WHAT'S IN THE BOX



\* Charge the speaker before first use.  
\*\* The plug type and the quantity of power cords, microphones, and microphone holders vary by regions.

# BLUETOOTH PAIRING



# PLAY

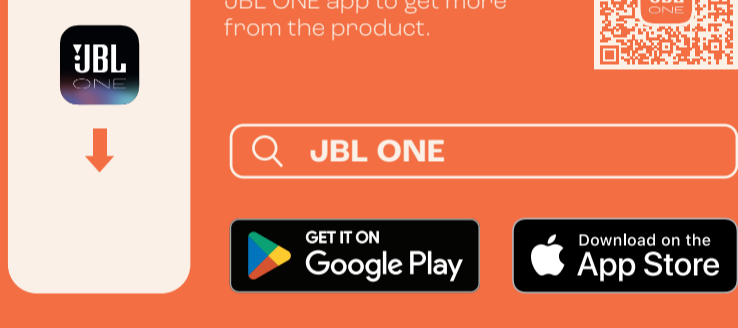


# LIGHTSHOW



Apply lightshow presets and more with the JBL ONE app.

# APP



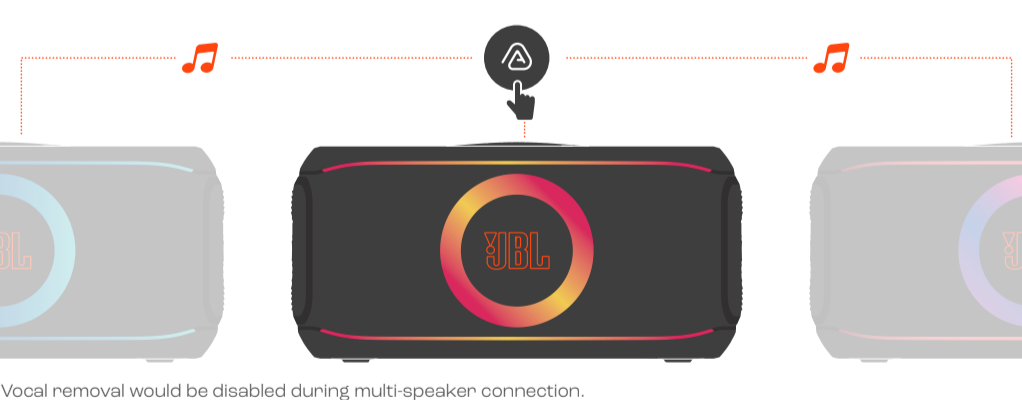
# MICROPHONE



# VOCAL REMOVAL

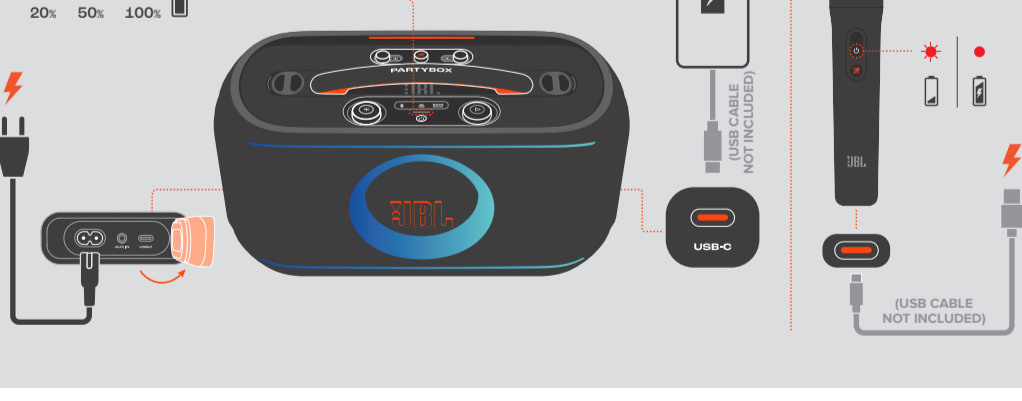


# MULTI-SPEAKER CONNECTION

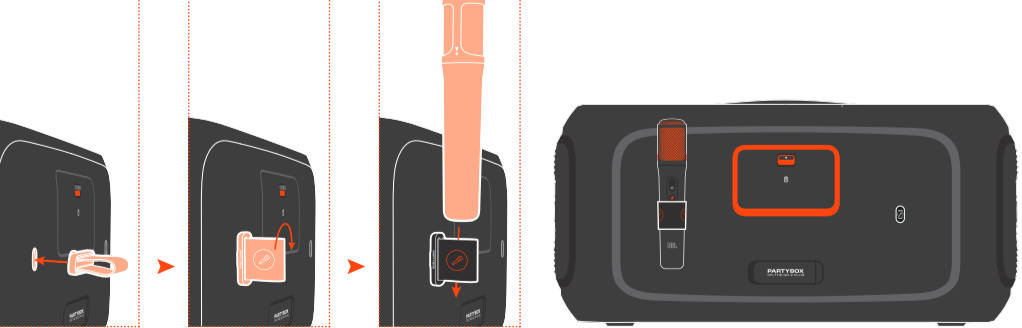


Vocal removal would be disabled during multi-speaker connection.

# CHARGING



# MICROPHONE HOLDER



# BATTERY REPLACEMENT

