

DW2450WS

FEATURES

- Adjusts the amount of salt used per wash to the hardness level of your water
- Adapts easily to differently shaped dishes and glasses with a height-adjustable middle rack and fold-down tines
- Removes food and grease with three powerful spray arms and custom wash and dry options for different soil levels
- Filters food efficiently through fine mesh for cleaner water throughout every cycle
- Dries every type of dish, utensil, and pan thoroughly with a hot rinse and fan-assist
- Operates in near silence that never interrupts
- Opt for a stainless-steel panel for a timeless, sophisticated look that coordinates with classic Wolf and Sub-Zero styles
- Or, choose custom panels to integrate into any kitchen design
- Provides better visibility with interior LED lights
- Maintains clean lines with sleek control panel and floor status light
- Marvel at the durability of the stainless-steel exterior and interior, built for decades of use
- LED lit interior for better interior visibility
- Cove's leak protection system offers peace of mind in the rare event of a leak. A conductivity sensor in the base of the unit will automatically stop a cycle in progress if it detects a leak.

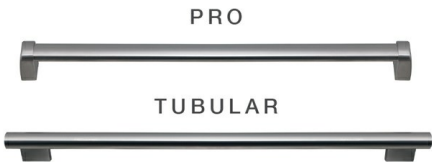
ACCESSORIES

- 24" Stainless Steel Door Panel Kits
- 60cm Stainless Steel Door Panel Kits
- 24" Stainless Steel Kickplates
- 60cm Stainless Steel Kickplates

Accessories are available through an authorized dealer.
For local dealer information, visit subzero-wolf.com/locator.



HANDLE ACCESSORIES



PRODUCT DETAILS

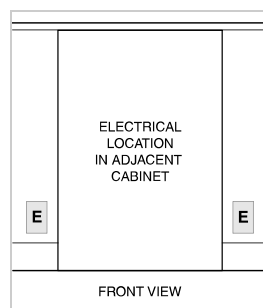
DISHWASHER

- 4 LED lights (2 sides; 2 top)
- 43 spray jets across three spray arms
- Four-stage, fine mesh filter
- Adjustable stemware rail
- Adjustable cup shelf
- Height-adjustable middle rack
- Easy-glide bottom rack
- Upper silverware rack
- One large utensil basket
- Water softener

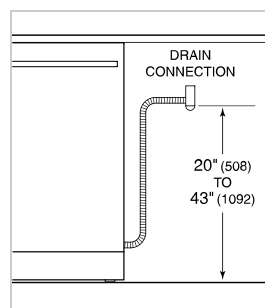
PRODUCT SPECIFICATIONS

Model	DW2450WS
Dimensions	23 5/8"W x 34 1/2"H x 23 1/4"D
Door Clearance	26 3/4"
Sound Level	41 dBA (Model and cycle/option dependent)
Electrical Supply	115 VAC, 60 Hz
Electrical Service	15 amp dedicated circuit
Receptacle	3-prong grounding-type
Cord Length	6'
Water Connection	5' braided tubing with 3/8" female compression fitting
Drain Connection	5' (1.5 m) corrugated tubing
Plumbing Pressure	30–140 psi

ELECTRICAL



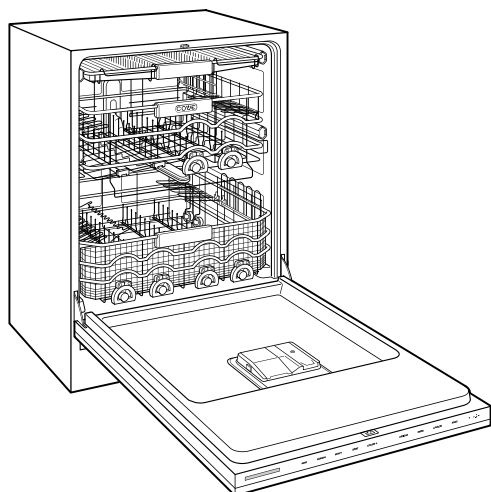
PLUMBING



COVE OPENING WIDTH Cove dishwashers accommodate varying opening widths. A 23 5/8" (60 cm) width provides minimum reveals and is ideal for new construction. A 24" width is also common; however, reveals for a 24" opening will be larger than the reveals for a 23 5/8" opening unless the panel width is adjusted accordingly. 24" and 60 cm stainless steel panels are available and must be specified accordingly.

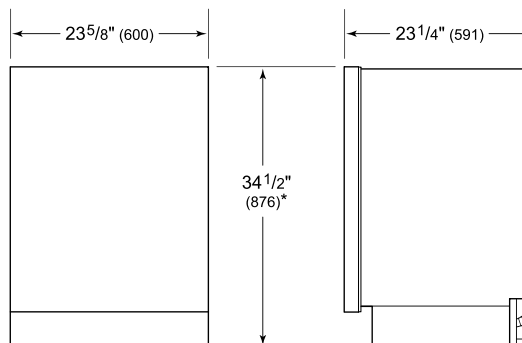
PANEL SPECIFICATIONS For complete panels specifications including width/height, weight requirements and thickness requirements visit subzero-wolf.com/reveal.

INTERIOR VIEW

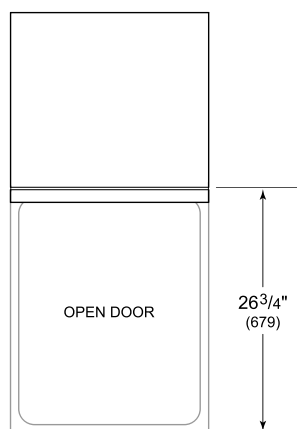


This illustration is intended for interior reference only and may not represent the exterior of the model being specified.

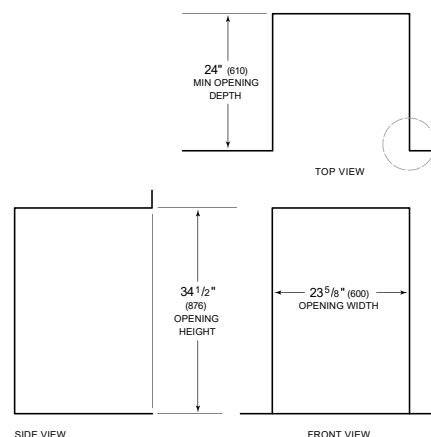
DIMENSIONS



*33 3/4" (857) MIN TO 34 3/4" (883) MAX



60 CM INSTALLATION



NOTE: 3 1/2" (89) finished returns will be visible and should be finished to match cabir

