

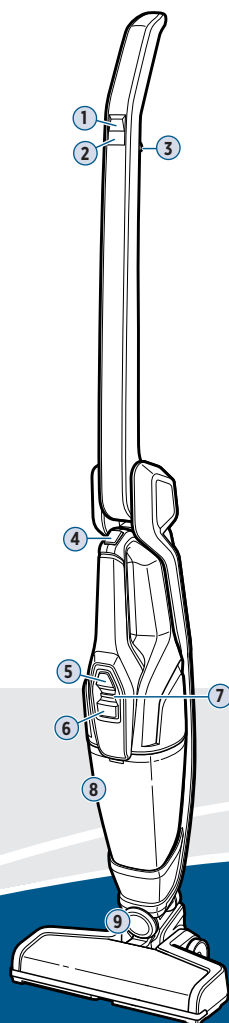


## READYCLEAN® CORDLESS 2-IN-1 LIGHTWEIGHT VACUUM 3190 SERIES

What's in the Box? .....	2
Assembling and Charging Your Vacuum.....	3
LED Display Status.....	3
Using the 2-Way Folding Handle.....	3
Using the Hand Vacuum.....	4
Emptying the Dirt Tank.....	4
Cleaning the Filters.....	5
Maintaining the Brush Roll.....	6
Troubleshooting.....	7
Warranty .....	7

### Product Overview

- |   |                             |
|---|-----------------------------|
| 1. Power Button                         | 6. Dirt Tank Release Button |
| 2. Brush Roll On/Off Button             | 7. Charging Light Indicator |
| 3. 2-Way Folding Handle Release Trigger | 8. Dirt Tank                |
| 4. Hand Vacuum Release Button           | 9. Swivel Head              |
| 5. Hand Vacuum Power Button             |                             |



### Go online for a comprehensive walkthrough of your new purchase!

This guide has everything you need to get ready for first use, including setting up, using and maintaining your machine, but online you'll find additional resources like tips and troubleshooting, videos, product registration, parts, and more. Go to **[support.BISSELL.com](https://support.bissell.com)**.

# IMPORTANT SAFETY INSTRUCTIONS



## READ ALL INSTRUCTIONS BEFORE USING YOUR APPLIANCE.

When using an electrical appliance, basic precautions should be observed, including the following:



## WARNING

### TO REDUCE THE RISK OF FIRE, ELECTRIC SHOCK OR INJURY:

- » Do not use outdoors or on wet surfaces.
- » Do not allow to be used as a toy. Close attention is necessary when used by or near children.
- » Do not use for any purpose other than described in this user guide. Use only manufacturer's recommended attachments.
- » Do not use with damaged cord or plug. If appliance is not working as it should, has been dropped, damaged, left outdoors, or dropped into water, have it repaired at an authorized service center.
- » Do not put any object into opening.
- » Do not use with any opening blocked.
- » Do not unplug by pulling on cord. To unplug, grasp the plug, not the cord.
- » Do not handle charger, including charger plug and charger terminal with wet hands.
- » Do not charge the machine outdoors.
- » Use only the charger supplied by the manufacturer to recharge.
- » Do not incinerate the appliance even if it is severely damaged. The batteries can explode in a fire.
- » Keep openings free of dust, lint, hair, and anything that may reduce airflow.
- » Keep hair, loose clothing, fingers, and all parts of body away from openings and moving parts.
- » Use extra care when cleaning stairs.
- » Do not use to pick up flammable or combustible materials (lighter fluid, gasoline, kerosene, etc.) or use in areas where they may be present.
- » Do not pick up toxic material (chlorine bleach, ammonia, drain cleaner, etc.).
- » Do not use vacuum cleaner in an enclosed space filled with vapors given off by oil-based paint, paint thinner, some moth-proofing substances, flammable dust, or other explosive or toxic vapors.
- » Do not pick up hard or sharp objects such as glass, nails, screws, coins, etc.
- » Do not pick up anything that is burning or smoking, such as cigarettes, matches or hot ashes.
- » Do not use without Dirt tank or filters in place.
- » Use only on dry, indoor surfaces.
- » Always turn OFF this appliance before connecting or disconnecting the motorized nozzle.
- » Do not pull or carry charger by the cord, use cord as a handle, close a door on cord, or pull cord around sharp edges or corners. Do not run appliance over cord.
- » Prevent unintentional starting. Ensure the switch is in the OFF-position before picking up or carrying the appliance. Carrying the appliance with your finger on the switch or energizing appliance that have the switch on invites accidents.
- » Under abusive conditions, liquid may be ejected from the battery; avoid contact. If contact accidentally occurs, flush with water. If liquid contacts eyes, additionally seek medical help. Liquid ejected from the battery may cause irritation or burns.
- » Do not use appliance that is damaged or modified. Damaged or modified batteries may exhibit unpredictable behavior resulting in fire, explosion or risk of injury.
- » Do not expose appliance to fire or excessive temperature. Exposure to fire or temperature above 130°C/265°F may cause explosion.
- » Follow all charging instructions and do not charge the appliance outside of the temperature range specified in the instructions. Charging improperly or at temperatures outside of the specified range may damage the battery and increase the risk of fire.
- » Have servicing performed by a qualified repair person using only identical replacement parts. This will ensure that the safety of the product is maintained.
- » Do not modify or attempt to repair the appliance except as indicated in the instructions for use and care.
- » Keep the temperature range of between 40-104°F when charging battery, storing machine or during use.
- » Use only with charger E-TEK, Model ZD12D140080US.
- » Recharge only with the charger specified by the manufacturer. A charger that is suitable for one type of battery pack may create a risk of fire when used with another battery pack.

## SAVE THESE INSTRUCTIONS

THIS MODEL IS FOR HOUSEHOLD USE ONLY.

COMMERCIAL USE OF THIS MACHINE VOIDS THE MANUFACTURER'S WARRANTY.



## WARNING

This product contains Lithium-Ion rechargeable batteries. DO NOT mix Lithium-Ion batteries with general household waste. According to Federal and State regulations, removal and proper disposal of Lithium-Ion batteries is required. For specific battery disposal instructions please contact Call2Recycle at 877-723-1297 or visit [www.call2recycle.org](http://www.call2recycle.org). For full instructions on battery removal for recycling visit [support.BISSELL.com](http://support.BISSELL.com).

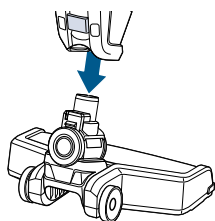


## What's in the Box?

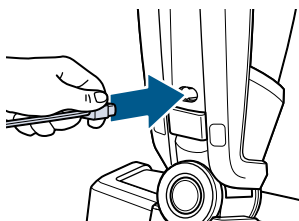
Standard accessories may vary by model. To identify what should be included with your purchase, please refer to the "Carton Contents" list located on the carton top flap.

Body	Foot	Charging Adapter	Crevice Tool	Upholstery Tool

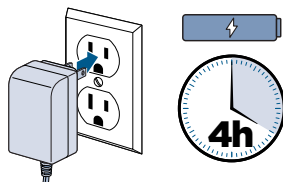
## Assembling and Charging Your Vacuum



**1.** Insert foot into body of the vacuum until you hear a “click”.



**2.** Insert charging adapter plug into the charging port on the back of the machine.



**3.** Plug the adapter into the wall outlet. Charge the machine completely for at least 4 hours prior to first use.

## LED Display Status

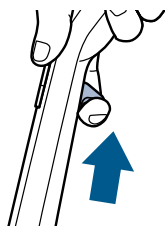
### During Charging

Battery Status	Light Status
Charging	Blinking red light (1 second)
Fully Charged	Green light (on 10 minutes, then blinks every 1 minute)
Charger, Battery or Motor Error	Red and green blinking light, contact Consumer Care

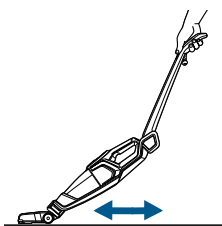
### During Use

Battery Status	Light Status
In Use	Solid green light
Low Power	Blinking red light
No Power	Solid red light (3 seconds)
Brush Stall	Solid red light, then machine shuts OFF

## Using the 2-Way Folding Handle



**1.** Pull the 2-Way Folding Handle release trigger to fold the handle.

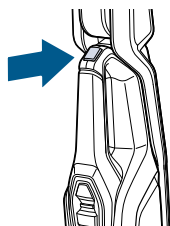


**2.** Fold the handle forward to easily clean underneath low places.

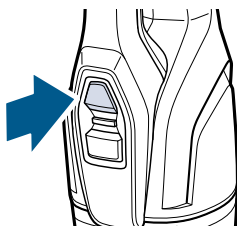


**3.** Fold the handle back for easy storage.

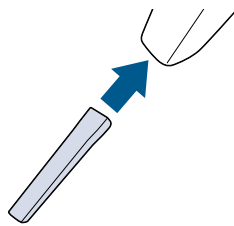
## Using the Hand Vacuum



**1.** Press the button on top of the hand vacuum handle and lightly pull to remove it from the machine.

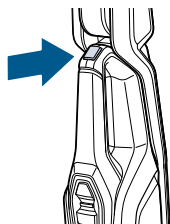


**2.** Press the power button to begin cleaning.



**3.** Insert the desired tool firmly into the hand vacuum nozzle.

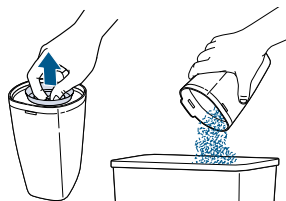
## Emptying the Dirt Tank



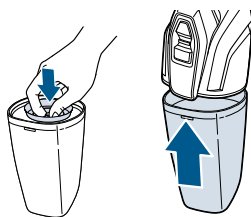
**1.** Make sure the vacuum is OFF. Remove the hand vacuum by pressing the release button on its top handle.



**2.** Hold the hand vacuum vertically and press the release button on the front to release the dirt tank.



**3.** Grasp filter tabs and pull up to remove filter assembly and empty dirt into waste container.



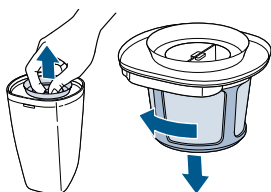
**4.** Replace filter assembly in the dirt tank, then snap the dirt tank back into place on the hand vacuum.

**⚠ WARNING** To reduce the risk of fire, electric shock or injury, turn power OFF and disconnect plug from electrical outlet before performing maintenance or troubleshooting.

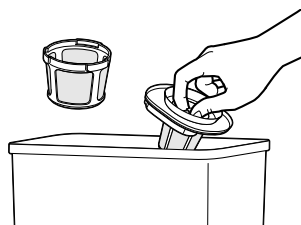
## Cleaning the Filters



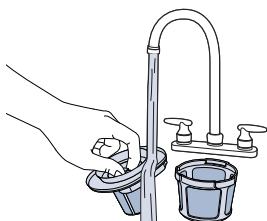
**1.** Turn power OFF and remove the dirt tank as directed in the “Emptying the Dirt Tank” section.



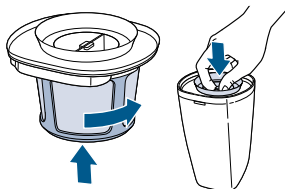
**2.** Grasp filter tabs and lift up to remove the washable filter assembly from the dirt tank. Grip the filter assembly, turn counter-clockwise and pull down to remove filter from filter screen.



**3.** Tap firmly against the inside of a waste container to remove any visible dirt.



**4.** Rinse the filter and screen in warm water to clean. Let dry completely.

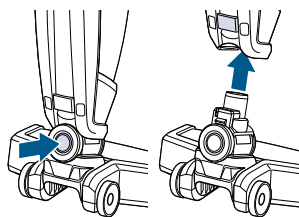


**5.** Replace filter into the filter screen and turn clockwise to lock into place. Reattach filter assembly into the dirt tank and attach to hand vacuum until it snaps securely in place.

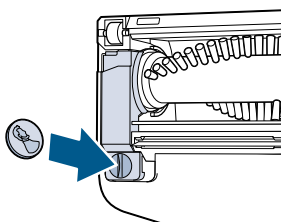


**WARNING** Do not operate your machine with damp or wet filters or without filters in place.

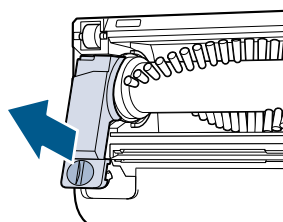
## Maintaining the Brush Roll



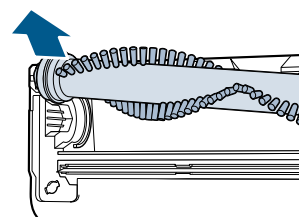
**1.** Make sure the vacuum is OFF. Press the vacuum foot release button to disconnect it from the vacuum.



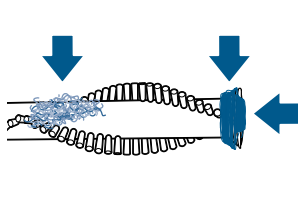
**2.** Turn the foot over and find the brush roll cover tab. Turn the screw counter-clockwise with a coin.



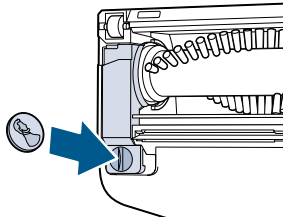
**3.** Slide the tab down to unlock and lift the corner cover piece.



**4.** Grasp the brush roll and remove from the foot.



**5.** Remove hair wrap from brush roll, brush roll endcap and end of brush roll.



**6.** Place the clean brush roll back into the foot and use a coin to turn lock clockwise to screw into place.

### **WARNING**

To reduce the risk of fire, electric shock or injury, turn power OFF and disconnect plug from electrical outlet before performing maintenance or troubleshooting.

## Troubleshooting

Below are some of the issues you may run into. If you don't see the issue you're experiencing below, visit [support.BISSELL.com](https://support.BISSELL.com).

Problem	Possible Cause	Remedies
Vacuum won't turn ON	Battery isn't fully charged.	Charge battery. Follow charging battery instructions on page 3.
	Wrong charger is being used.	Be sure to use only the charger supplied with your product. The label on the detachable hand vacuum will list which charger can be used.
Brush roll not turning	Brush roll is jammed.	Remove obstruction. Follow instructions on page 6.
	Brush roll needs to be reset.	Turn machine OFF and clean the brush roll and brush roll endcap area following instructions on page 6. The LED light will reset when the machine is turned ON.
	Broken brush roll.	Visit <a href="https://BISSELL.com">BISSELL.com</a> to order replacement parts.
Vacuum cleaner has low suction	Dirt tank is full.	Empty dirt tank.
	Dirt tank isn't installed properly.	Position dirt tank correctly and snap firmly into place.
	Foot is loose.	Make sure foot is fully inserted into body of machine.
	Filters need cleaning.	Follow filter instructions on page 5.
	Filters need replacing.	Visit <a href="https://BISSELL.com">BISSELL.com</a> to order replacement parts.
	Clog or obstruction in foot area.	Detach foot from body and look for and remove clog from brush chamber.
Visible dirt escaping from cleaner	Dirt tank is full of debris.	Empty dirt tank.
	Filter assembly is missing or installed incorrectly.	Check filter for correct installation.
	Dirt tank installed incorrectly.	Position dirt tank correctly and snap firmly into place.
Vacuum won't charge	Wrong charger is being used.	Use only the charger that comes with the machine.
	Hand vacuum may not be installed in place properly.	Remove the hand vacuum and install it properly.
Vacuum won't turn on and LED light is solid red	Brush roll stalled by debris.	Turn machine OFF and clear the brush roll and brush roll endcap area following instructions on page 6. The LED light will reset when the machine is turned ON.

**Note:** Any other servicing should be performed by an authorized service representative.

## Warranty

1-Year limited warranty, may vary by state. Visit [support.BISSELL.com](https://support.BISSELL.com) or call 1-800-237-7691 for complete warranty information.



## We're Waggin' Our Tails!

BISSELL® proudly supports BISSELL Pet Foundation® and its mission to help save homeless pets. When you buy a BISSELL product, you help save pets, too. We're proud to design products that help make pet messes, odors and pet homelessness disappear.

Visit **BISSELLsavespets.com** to learn more.

## But wait, there's more!

Join us online for a complete guide to your new product, including troubleshooting, product registration, parts, and more.

**Go to [support.BISSELL.com](https://support.BISSELL.com).**



REGISTER



INFO



VIDEOS



PARTS



SUPPORT



©2021 BISSELL Inc. All rights reserved.  
Part Number 162548112/20 RevA